

## p107 Rabbit pAb

CatalogNo: YT3484

### | Key Features

#### Host Species

- Rabbit

#### Reactivity

- Human, Mouse

#### Applications

- IF, ELISA

#### MW

- 121kD (Calculated)

#### Isotype

- IgG

### | Recommended Dilution Ratios

**IF 1:200-1:1000**

**ELISA 1:5000**

**Not yet tested in other applications**

### | Storage

**Storage\*** -15°C to -25°C/1 year (Do not lower than -25°C)

**Formulation** Liquid in PBS containing 50% glycerol, 0.5% BSA and 0.02% sodium azide.

### | Basic Information

**Clonality** Polyclonal

### | Immunogen Information

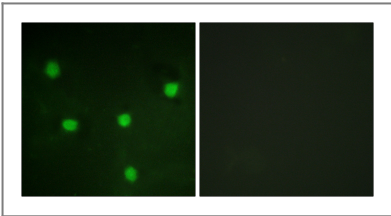
**Immunogen** The antiserum was produced against synthesized peptide derived from human RBL1. AA range: 335-384

**Specificity** p107 Polyclonal Antibody detects endogenous levels of p107 protein.

### | Target Information

Gene name	RBL1		
Protein Name	Retinoblastoma-like protein 1		
	Organism	Gene ID	UniProt ID
	Human	<a href="#">5933</a> ;	<a href="#">P28749</a> ;
	Mouse	<a href="#">19650</a> ;	<a href="#">Q64701</a> ;
Cellular Localization	Nucleus .		
Tissue specificity	Testis,		
Function	<p>Function:Key regulator of entry into cell division. Directly involved in heterochromatin formation by maintaining overall chromatin structure and, in particular, that of constitutive heterochromatin by stabilizing histone methylation. Recruits and targets histone methyltransferases SUV420H1 and SUV420H2, leading to epigenetic transcriptional repression. Controls histone H4 'Lys-20' trimethylation. Probably acts as a transcription repressor by recruiting chromatin-modifying enzymes to promoters. Potent inhibitor of E2F-mediated trans-activation. Forms a complex with adenovirus E1A and with SV40 large T antigen. May bind and modulate functionally certain cellular proteins with which T and E1A compete for pocket binding. May act as a tumor suppressor.,PTM:Exists in both phosphorylated and unphosphorylated forms, and T, but not E1A, binds only to the unphosphorylated form. Cell-cycle arrest properties are inactivated by phosphorylation on Thr-332, Ser-640, Ser-964 and Ser-975 by CDK4.,similarity:Belongs to the retinoblastoma protein (RB) family.,subunit:Interacts with SUV420H1 and SUV420H2 (By similarity). Component of the DREAM complex (also named LINC complex) at least composed of E2F4, E2F5, LIN9, LIN37, LIN52, LIN54, MYBL1, MYBL2, RBL1, RBL2, RBBP4, TFDP1 and TFDP2. The complex exists in quiescent cells where it represses cell cycle-dependent genes. It dissociates in S phase when LIN9, LIN37, LIN52 and LIN54 form a subcomplex that binds to MYBL2. Interacts with AATF. Interacts with KDM5A. Interacts with SV40 and JC virus large T antigens.,</p>		

| Validation Data



Immunofluorescence analysis of NIH/3T3 cells, using RBL1 Antibody. The picture on the right is blocked with the synthesized peptide.

| Contact information

Orders: order.cn@immunoway.com  
Support: support.cn@immunoway.com  
Telephone: 400-8787-807(China)  
Website: <http://www.immunoway.com.cn>  
Address: 2200 Ringwood Ave San Jose, CA 95131 USA



Please scan the QR code  
to access additional  
product information:  
**p107 Rabbit pAb**

---

For Research Use Only. Not for Use in Diagnostic Procedures.

[Antibody](#) | [ELISA Kits](#) | [Protein](#) | [Reagents](#)