

OY-TES-1 Rabbit pAb

CatalogNo: YT3483

Key Features

Host Species

- Rabbit

Reactivity

- Human, Mouse, Rat

Applications

- WB, IHC, IF, ELISA

MW

- 61kD (Observed)

Isotype

- IgG

Storage

Storage* -15°C to -25°C/1 year (Do not lower than -25°C)

Formulation Liquid in PBS containing 50% glycerol, 0.5% BSA and 0.02% sodium azide.

Recommended Dilution Ratios

WB 1:500-1:2000

IHC 1:100-1:300

IF 1:200-1:1000

ELISA 1:10000

Not yet tested in other applications.

Basic Information

Clonality Polyclonal

Immunogen Information

Immunogen The antiserum was produced against synthesized peptide derived from human ACRBP. AA range:181-230

Specificity OY-TES-1 Polyclonal Antibody detects endogenous levels of OY-TES-1 protein.

Target Information

Gene name ACRBP

Protein Name Acrosin-binding protein

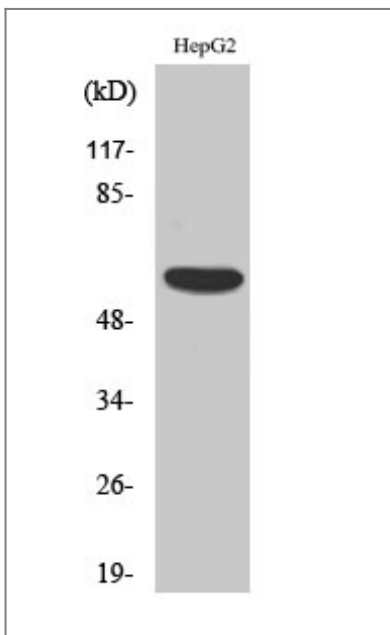
Organism	Gene ID	UniProt ID
Human	84519;	Q8NEB7;
Mouse		Q3V140;

Cellular Localization Secreted . Cytoplasmic vesicle, secretory vesicle, acrosome .

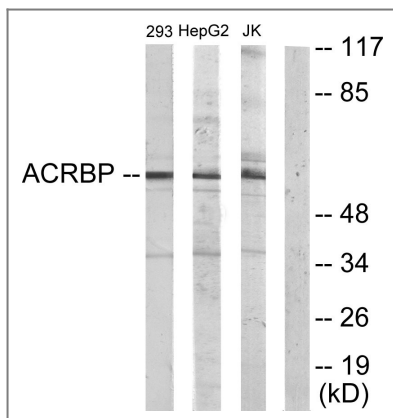
Tissue specificity Expression restricted to testis in normal tissue. Expressed in a wide spectrum of cancers, including bladder, breast, liver, lung and colon cancers.

Function Function:May be involved in packaging and condensation of the acrosin zymogen in the acrosomal matrix via its association with proacrosin.,PTM:Phosphorylated on Tyr residues in capacitated sperm.,PTM:The N-terminus is blocked.,subcellular location:Colocalizes with proacrosin in the acrosome of sperm.,subunit:Binds proacrosin.,tissue specificity:Expression restricted to testis in normal tissue. Expressed in a wide spectrum of cancers, including bladder, breast, liver, lung and colon cancers.,

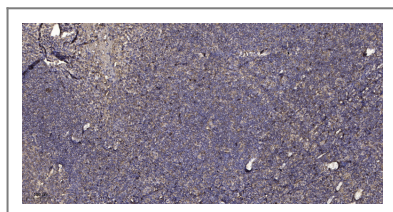
Validation Data



Western Blot analysis of various cells using OY-TES-1 Polyclonal Antibody



Western blot analysis of lysates from HepG2, Jurkat, and 293 cells, using ACRBP Antibody. The lane on the right is blocked with the synthesized peptide.



Immunohistochemical analysis of paraffin-embedded human tonsil. 1, Antibody was diluted at 1:200(4° overnight). 2, Tris-EDTA,pH9.0 was used for antigen retrieval. 3,Secondary antibody was diluted at 1:200(room temperature, 30min).

Contact information

Orders: order.cn@immunoway.com
 Support: support.cn@immunoway.com
 Telephone: 400-8787-807(China)
 Website: <http://www.immunoway.com.cn>
 Address: 2200 Ringwood Ave San Jose, CA 95131 USA



Please scan the QR code to access additional product information:
OY-TES-1 Rabbit pAb

For Research Use Only. Not for Use in Diagnostic Procedures.

[Antibody](#) | [ELISA Kits](#) | [Protein](#) | [Reagents](#)