

## OTUD2 Rabbit pAb

CatalogNo: YT3476

### Key Features

#### Host Species

- Rabbit

#### Reactivity

- Human, Mouse, Rat

#### Applications

- WB, ELISA

#### MW

- 35kD (Observed)

#### Isotype

- IgG

### Storage

**Storage\*** -15°C to -25°C/1 year (Do not lower than -25°C)

**Formulation** Liquid in PBS containing 50% glycerol, 0.5% BSA and 0.02% sodium azide.

### Recommended Dilution Ratios

**WB 1:500-1:2000**

**ELISA 1:10000**

**Not yet tested in other applications.**

### Basic Information

**Clonality** Polyclonal

### Immunogen Information

**Immunogen** The antiserum was produced against synthesized peptide derived from human YOD1. AA range:116-165

**Specificity** OTUD2 Polyclonal Antibody detects endogenous levels of OTUD2 protein.

### Target Information

**Gene name** YOD1

**Protein Name** Ubiquitin thioesterase OTU1

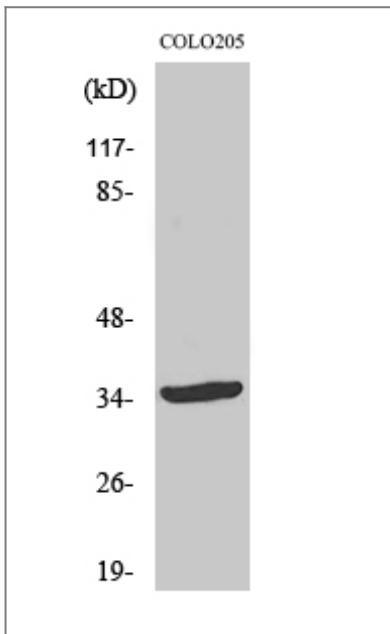
Organism	Gene ID	UniProt ID
Human	<a href="#">55432;</a>	<a href="#">Q5VVQ6;</a>
Mouse		<a href="#">Q8CB27;</a>

**Cellular Localization** Cytoplasm . Recruited to damaged lysosomes decorated with K48-linked ubiquitin chains. .

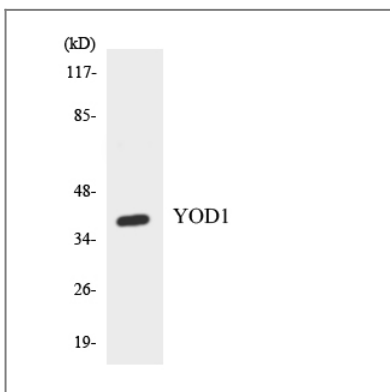
**Tissue specificity** Fetal liver,Spinal cord,Testis,

**Function** Function:Hydrolase that can remove conjugated ubiquitin from proteins and may therefore play an important regulatory role at the level of protein turnover by preventing degradation.,sequence Caution:Wrong choice of frame.,similarity:Contains 1 C2H2-type zinc finger.,similarity:Contains 1 OTU domain.,

## Validation Data



Western Blot analysis of various cells using OTUD2 Polyclonal Antibody



Western blot analysis of the lysates from HT-29 cells using YOD1 antibody.

## | Contact information

Orders: order.cn@immunoway.com  
Support: support.cn@immunoway.com  
Telephone: 400-8787-807(China)  
Website: <http://www.immunoway.com.cn>  
Address: 2200 Ringwood Ave San Jose, CA 95131 USA



Please scan the QR code  
to access additional  
product information:  
**OTUD2 Rabbit pAb**

---

For Research Use Only. Not for Use in Diagnostic Procedures.

[Antibody](#) | [ELISA Kits](#) | [Protein](#) | [Reagents](#)