

ORC1 Rabbit pAb

CatalogNo: YT3469

Key Features

Host Species

- Rabbit

Reactivity

- Human,Rat,Mouse,

Applications

- WB,ELISA

MW

- 100,120kD (Observed)

Isotype

- IgG

Recommended Dilution Ratios

WB 1:500-1:2000

ELISA 1:5000

Not yet tested in other applications.

Storage

Storage*

-15°C to -25°C/1 year(Do not lower than -25°C)

Formulation

Liquid in PBS containing 50% glycerol, 0.5% BSA and 0.02% sodium azide.

Basic Information

Clonality

Polyclonal

Immunogen Information

Immunogen

The antiserum was produced against synthesized peptide derived from human ORC1L. AA range:331-380

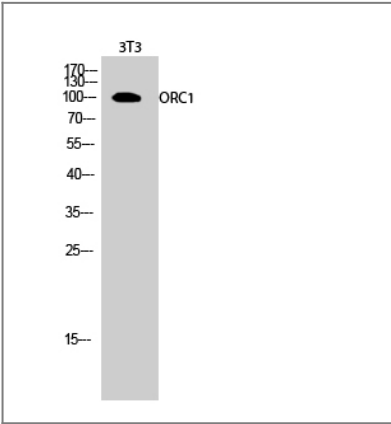
Specificity

ORC1 Polyclonal Antibody detects endogenous levels of ORC1 protein.

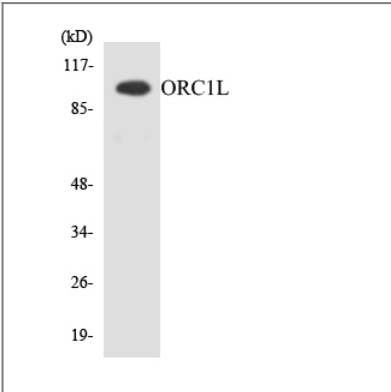
Target Information

Gene name	ORC1		
Protein Name	Origin recognition complex subunit 1		
	Organism	Gene ID	UniProt ID
	Human	4998 ;	Q13415 ;
	Mouse		Q9Z1N2 ;
Cellular Localization	Nucleus.		
Tissue specificity	Epithelium, Eye,		
Function	Function:Component of the origin recognition complex (ORC) that binds origins of replication. It has a role in both chromosomal replication and mating type transcriptional silencing. Binds to the ARS consensus sequence (ACS) of origins of replication in an ATP-dependent manner.,similarity:Belongs to the ORC1 family.,similarity:Contains 1 BAH domain.,subunit:ORC is composed of six subunits. Interacts with CDC6 and MYST2/HBO1.,		

| Validation Data



Western Blot analysis of 3T3 cells using ORC1 Polyclonal Antibody



Western blot analysis of the lysates from HepG2 cells using ORC1L antibody.

| Contact information

Orders: order.cn@immunoway.com
Support: support.cn@immunoway.com
Telephone: 400-8787-807(China)
Website: <http://www.immunoway.com.cn>
Address: 2200 Ringwood Ave San Jose, CA 95131 USA



Please scan the QR code
to access additional
product information:
ORC1 Rabbit pAb

For Research Use Only. Not for Use in Diagnostic Procedures.

[Antibody](#) | [ELISA Kits](#) | [Protein](#) | [Reagents](#)