

Olfactory receptor O13C2/9 Rabbit pAb

CatalogNo: YT3459

Key Features

Host Species

- Rabbit

Reactivity

- Human

Applications

- WB,IF,ELISA

MW

- 36kD (Observed)

Isotype

- IgG

Storage

Storage* -15°C to -25°C/1 year(Do not lower than -25°C)

Formulation Liquid in PBS containing 50% glycerol, 0.5% BSA and 0.02% sodium azide.

Recommended Dilution Ratios

WB 1:500-1:2000

IF 1:200-1:1000

ELISA 1:20000

Not yet tested in other applications.

Basic Information

Clonality Polyclonal

Immunogen Information

Immunogen The antiserum was produced against synthesized peptide derived from human OR13C2/13C9. AA range:232-281

Specificity Olfactory receptor O13C2/9 Polyclonal Antibody detects endogenous levels of Olfactory receptor O13C2/9 protein.

Target Information

Gene name OR13C2/OR13C9

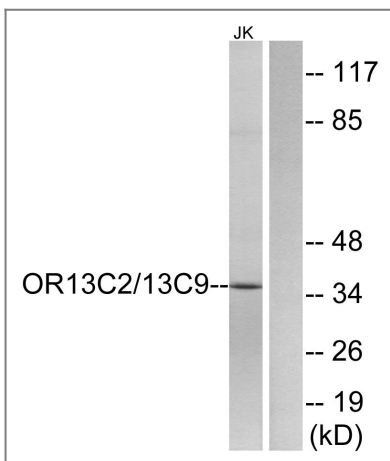
Protein Name Olfactory receptor 13C2/9

Organism	Gene ID	UniProt ID
Human	392376 ; 286362 ;	Q8NGS9 ; Q8NGT0 ;

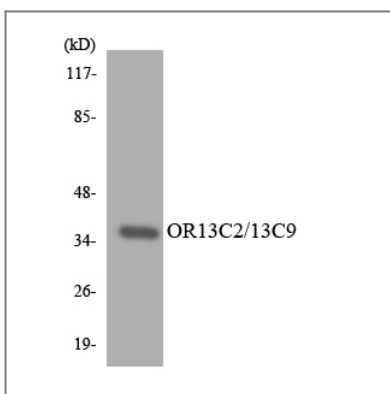
Cellular Localization Cell membrane; Multi-pass membrane protein.

Function Function:Odorant receptor .,similarity:Belongs to the G-protein coupled receptor 1 family.,

Validation Data



Western blot analysis of lysates from Jurkat cells, using OR13C2/13C9 Antibody. The lane on the right is blocked with the synthesized peptide.



Western blot analysis of the lysates from K562 cells using OR13C2/13C9 antibody.

Contact information

Orders: order.cn@immunoway.com
Support: support.cn@immunoway.com
Telephone: 400-8787-807(China)
Website: http://www.immunoway.com.cn
Address: 2200 Ringwood Ave San Jose, CA 95131 USA



Please scan the QR code
to access additional
product information:
**Olfactory receptor
O13C2/9 Rabbit pAb**

For Research Use Only. Not for Use in Diagnostic Procedures.

[Antibody](#) | [ELISA Kits](#) | [Protein](#) | [Reagents](#)