

Olfactory receptor 9Q2 Rabbit pAb

CatalogNo: YT3458

Key Features

Host Species

- Rabbit

Reactivity

- Human

Applications

- WB,IF,ELISA

MW

- 38kD (Observed)

Isotype

- IgG

Recommended Dilution Ratios

WB 1:500-1:2000

IF 1:200-1:1000

ELISA 1:20000

Not yet tested in other applications.

Storage

Storage*

-15°C to -25°C/1 year(Do not lower than -25°C)

Formulation

Liquid in PBS containing 50% glycerol, 0.5% BSA and 0.02% sodium azide.

Basic Information

Clonality

Polyclonal

Immunogen Information

Immunogen

The antiserum was produced against synthesized peptide derived from human OR9Q2. AA range:232-281

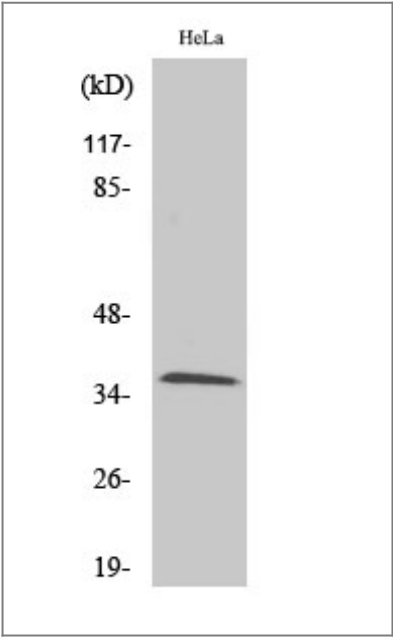
Specificity

Olfactory receptor 9Q2 Polyclonal Antibody detects endogenous levels of Olfactory receptor 9Q2 protein.

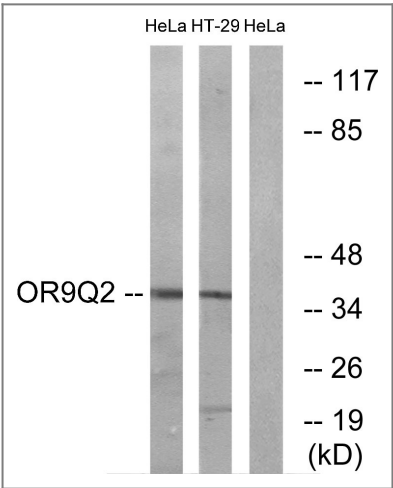
Target Information

Gene name	OR9Q2		
Protein Name	Olfactory receptor 9Q2		
	Organism	Gene ID	UniProt ID
	Human	219957 ;	Q8NGE9 ;
Cellular Localization	Cell membrane; Multi-pass membrane protein.		
Function	Function:Odorant receptor .,similarity:Belongs to the G-protein coupled receptor 1 family.,		

Validation Data



Western Blot analysis of various cells using Olfactory receptor 9Q2 Polyclonal Antibody



Western blot analysis of lysates from HeLa and HT-29 cells, using OR9Q2 Antibody. The lane on the right is blocked with the synthesized peptide.

| Contact information

Orders: order.cn@immunoway.com
Support: support.cn@immunoway.com
Telephone: 400-8787-807(China)
Website: <http://www.immunoway.com.cn>
Address: 2200 Ringwood Ave San Jose, CA 95131 USA



Please scan the QR code
to access additional
product information:
**Olfactory receptor
9Q2 Rabbit pAb**

For Research Use Only. Not for Use in Diagnostic Procedures.

[Antibody](#) | [ELISA Kits](#) | [Protein](#) | [Reagents](#)