

Olfactory receptor 8K3 Rabbit pAb

CatalogNo: YT3451

Key Features

Host Species

- Rabbit

Reactivity

- Human

Applications

- WB,IF,ELISA

MW

- 33kD (Observed)

Isotype

- IgG

Storage

Storage* -15°C to -25°C/1 year(Do not lower than -25°C)

Formulation Liquid in PBS containing 50% glycerol, 0.5% BSA and 0.02% sodium azide.

Recommended Dilution Ratios

WB 1:500-1:2000

IF 1:200-1:1000

ELISA 1:10000

Not yet tested in other applications.

Basic Information

Clonality Polyclonal

Immunogen Information

Immunogen The antiserum was produced against synthesized peptide derived from human OR8K3. AA range:236-285

Specificity Olfactory receptor 8K3 Polyclonal Antibody detects endogenous levels of Olfactory receptor 8K3 protein.

| Target Information

Gene name OR8K3

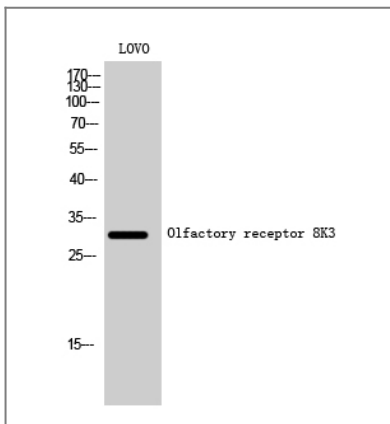
Protein Name Olfactory receptor 8K3

Organism	Gene ID	UniProt ID
Human	219473 ;	Q8NH51 ;

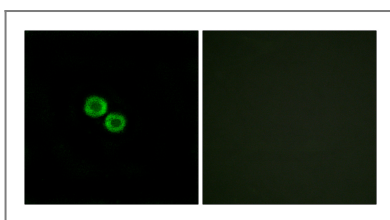
Cellular Localization Cell membrane; Multi-pass membrane protein.

Function Function:Odorant receptor .,similarity:Belongs to the G-protein coupled receptor 1 family.,

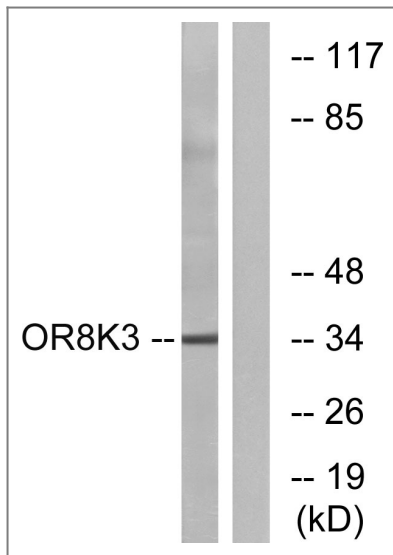
| Validation Data



Western Blot analysis of LOVO cells using Olfactory receptor 8K3 Polyclonal Antibody



Immunofluorescence analysis of HUVEC cells, using OR8K3 Antibody. The picture on the right is blocked with the synthesized peptide.



Western blot analysis of lysates from LOVO cells, using OR8K3 Antibody. The lane on the right is blocked with the synthesized peptide.

Contact information

Orders: order.cn@immunoway.com
Support: support.cn@immunoway.com
Telephone: 400-8787-807(China)
Website: <http://www.immunoway.com.cn>
Address: 2200 Ringwood Ave San Jose, CA 95131 USA



Please scan the QR code to access additional product information:
**Olfactory receptor
8K3 Rabbit pAb**

For Research Use Only. Not for Use in Diagnostic Procedures.

[Antibody](#) | [ELISA Kits](#) | [Protein](#) | [Reagents](#)