

Olfactory receptor 7E5P Rabbit pAb

CatalogNo: YT3437

Key Features

Host Species

- Rabbit

Reactivity

- Human,Rat,Mouse,

Applications

- WB,IF,ELISA

MW

- 26kD (Observed)

Isotype

- IgG

Recommended Dilution Ratios

WB 1:500-1:2000**IF 1:200-1:1000****ELISA 1:10000****Not yet tested in other applications.**

Storage

Storage*

-15°C to -25°C/1 year(Do not lower than -25°C)

Formulation

Liquid in PBS containing 50% glycerol, 0.5% BSA and 0.02% sodium azide.

Basic Information

Clonality

Polyclonal

Immunogen Information

Immunogen

The antiserum was produced against synthesized peptide derived from human OR7E5P. AA range:35-84

Specificity

Olfactory receptor 7E5P Polyclonal Antibody detects endogenous levels of Olfactory receptor 7E5P protein.

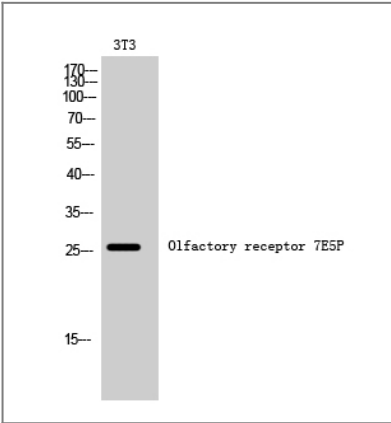
Target Information

Gene name OR7E5P

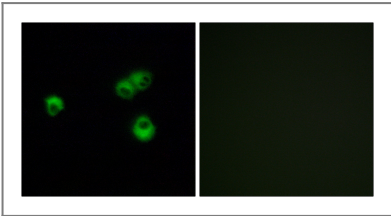
Protein Name Seven transmembrane helix receptor

Organism	Gene ID	UniProt ID
Human	219445;	Q96N54;

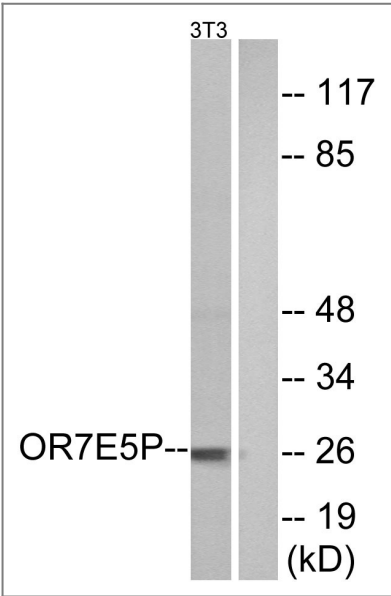
Validation Data



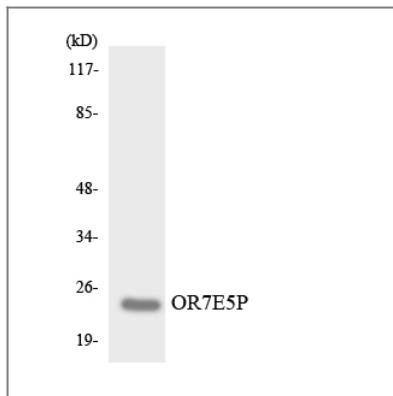
Western Blot analysis of 3T3 cells using Olfactory receptor 7E5P Polyclonal Antibody



Immunofluorescence analysis of MCF-7 cells, using OR7E5P Antibody. The picture on the right is blocked with the synthesized peptide.



Western blot analysis of lysates from NIH/3T3 cells, using OR7E5P Antibody. The lane on the right is blocked with the synthesized peptide.



Western blot analysis of the lysates from COLO205 cells using OR7E5P antibody.

Contact information

Orders: order.cn@immunoway.com
Support: support.cn@immunoway.com
Telephone: 400-8787-807(China)
Website: <http://www.immunoway.com.cn>
Address: 2200 Ringwood Ave San Jose, CA 95131 USA



Please scan the QR code to access additional product information:

**Olfactory receptor
7E5P Rabbit pAb**

For Research Use Only. Not for Use in Diagnostic Procedures.

[Antibody](#) | [ELISA Kits](#) | [Protein](#) | [Reagents](#)