

## Olfactory receptor 5U1 Rabbit pAb

CatalogNo: YT3419

### Key Features

#### Host Species

- Rabbit

#### Reactivity

- Human

#### Applications

- IF,ELISA

#### MW

- 36kD (Calculated)

#### Isotype

- IgG

### Recommended Dilution Ratios

**IF 1:200-1:1000**

**ELISA 1:5000**

**Not yet tested in other applications**

### Storage

#### Storage\*

-15°C to -25°C/1 year(Do not lower than -25°C)

#### Formulation

Liquid in PBS containing 50% glycerol, 0.5% BSA and 0.02% sodium azide.

### Basic Information

#### Clonality

Polyclonal

### Immunogen Information

#### Immunogen

The antiserum was produced against synthesized peptide derived from human OR5U1. AA range:272-321

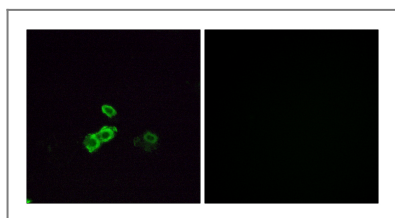
#### Specificity

Olfactory receptor 5U1 Polyclonal Antibody detects endogenous levels of Olfactory receptor 5U1 protein.

### Target Information

<b>Gene name</b>	OR14J1		
<b>Protein Name</b>	Olfactory receptor 14J1		
	<b>Organism</b>	<b>Gene ID</b>	<b>UniProt ID</b>
	Human	<a href="#">442191</a> ;	<a href="#">Q9UGF5</a> ;
<b>Cellular Localization</b>	Cell membrane; Multi-pass membrane protein.		
<b>Function</b>	Function:Odorant receptor .,similarity:Belongs to the G-protein coupled receptor 1 family.,		

## Validation Data



Immunofluorescence analysis of MCF7 cells, using OR5U1 Antibody. The picture on the right is blocked with the synthesized peptide.

## Contact information

Orders: [order.cn@immunoway.com](mailto:order.cn@immunoway.com)  
 Support: [support.cn@immunoway.com](mailto:support.cn@immunoway.com)  
 Telephone: 400-8787-807(China)  
 Website: <http://www.immunoway.com.cn>  
 Address: 2200 Ringwood Ave San Jose, CA 95131 USA



Please scan the QR code  
 to access additional  
 product information:  
**Olfactory receptor  
 5U1 Rabbit pAb**

For Research Use Only. Not for Use in Diagnostic Procedures.

[Antibody](#) | [ELISA Kits](#) | [Protein](#) | [Reagents](#)