

## Olfactory receptor 5L1/2 Rabbit pAb

CatalogNo: YT3410

### Key Features

#### Host Species

- Rabbit

#### Reactivity

- Human

#### Applications

- IF,ELISA

#### MW

- 35kD (Calculated)

#### Isotype

- IgG

### Recommended Dilution Ratios

**IF 1:200-1:1000**

**ELISA 1:5000**

**Not yet tested in other applications**

### Storage

#### Storage\*

-15°C to -25°C/1 year(Do not lower than -25°C)

#### Formulation

Liquid in PBS containing 50% glycerol, 0.5% BSA and 0.02% sodium azide.

### Basic Information

#### Clonality

Polyclonal

### Immunogen Information

#### Immunogen

The antiserum was produced against synthesized peptide derived from human OR5L1/2. AA range:55-104

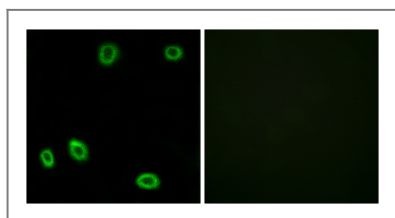
#### Specificity

Olfactory receptor 5L1/2 Polyclonal Antibody detects endogenous levels of Olfactory receptor 5L1/2 protein.

### Target Information

|                              |   |  |   |
|------------------------------|---|--|---|
| <b>Gene name</b>             | OR5L1/OR5L2   |  |   |
| <b>Protein Name</b>          | Olfactory receptor 5L1/2  |  |   |
|                              | <b>Organism</b>   | <b>Gene ID</b>                                   | <b>UniProt ID</b>                                 |
|                              | Human   | <a href="#">219437</a> ; <a href="#">26338</a> ; | <a href="#">Q8NGL2</a> ; <a href="#">Q8NGL0</a> ; |
| <b>Cellular Localization</b> | Cell membrane; Multi-pass membrane protein.   |  |   |
| <b>Function</b>              | Function:Odorant receptor .,similarity:Belongs to the G-protein coupled receptor 1 family., |  |   |

## Validation Data



Immunofluorescence analysis of HUVEC cells, using OR5L1/2 Antibody. The picture on the right is blocked with the synthesized peptide.

## Contact information

Orders: [order.cn@immunoway.com](mailto:order.cn@immunoway.com)  
 Support: [support.cn@immunoway.com](mailto:support.cn@immunoway.com)  
 Telephone: 400-8787-807(China)  
 Website: <http://www.immunoway.com.cn>  
 Address: 2200 Ringwood Ave San Jose, CA 95131 USA



Please scan the QR code to access additional product information:  
**Olfactory receptor 5L1/2 Rabbit pAb**

For Research Use Only. Not for Use in Diagnostic Procedures.

[Antibody](#) | [ELISA Kits](#) | [Protein](#) | [Reagents](#)