

Olfactory receptor 5H6 Rabbit pAb

CatalogNo: YT3406

Key Features

Host Species

- Rabbit

Reactivity

- Human

Applications

- WB,IF,ELISA

MW

- 35kD (Observed)

Isotype

- IgG

Recommended Dilution Ratios

WB 1:500-1:2000

IF 1:200-1:1000

ELISA 1:10000

Not yet tested in other applications.

Storage

Storage*

-15°C to -25°C/1 year(Do not lower than -25°C)

Formulation

Liquid in PBS containing 50% glycerol, 0.5% BSA and 0.02% sodium azide.

Basic Information

Clonality

Polyclonal

Immunogen Information

Immunogen

The antiserum was produced against synthesized peptide derived from human OR5H6. AA range:215-264

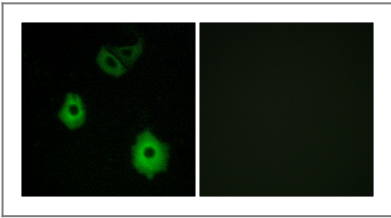
Specificity

Olfactory receptor 5H6 Polyclonal Antibody detects endogenous levels of Olfactory receptor 5H6 protein.

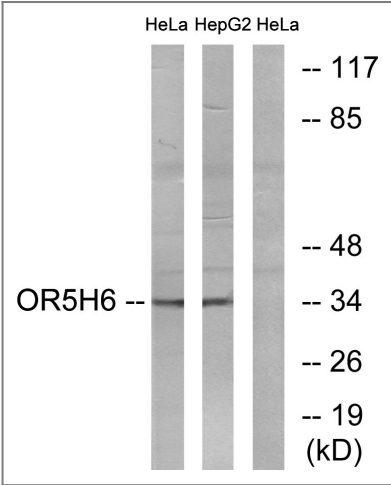
Target Information

| | | | |
|-----------------------|--|-------------------------|--------------------------|
| Gene name | OR5H6 | | |
| Protein Name | Olfactory receptor 5H6 | | |
| | Organism | Gene ID | UniProt ID |
| | Human | 79295 ; | Q8NGV6 ; |
| Cellular Localization | Cell membrane; Multi-pass membrane protein. | | |
| Function | Caution:It is uncertain whether Met-1 or Met-17 is the initiator.,Function:Odorant receptor .,similarity:Belongs to the G-protein coupled receptor 1 family., | | |

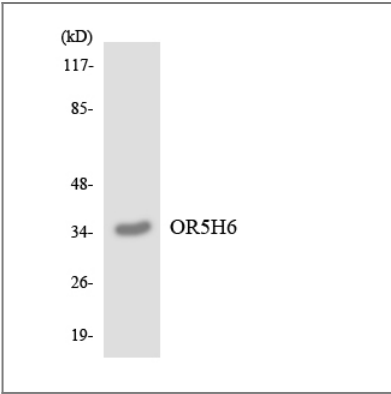
Validation Data



Immunofluorescence analysis of A549 cells, using OR5H6 Antibody. The picture on the right is blocked with the synthesized peptide.



Western blot analysis of lysates from HeLa and HepG2 cells, using OR5H6 Antibody. The lane on the right is blocked with the synthesized peptide.



Western blot analysis of the lysates from COLO205 cells using OR5H6 antibody.

| Contact information

Orders: order.cn@immunoway.com
Support: support.cn@immunoway.com
Telephone: 400-8787-807(China)
Website: <http://www.immunoway.com.cn>
Address: 2200 Ringwood Ave San Jose, CA 95131 USA



Please scan the QR code
to access additional
product information:

**Olfactory receptor
5H6 Rabbit pAb**

For Research Use Only. Not for Use in Diagnostic Procedures.

[Antibody](#) | [ELISA Kits](#) | [Protein](#) | [Reagents](#)