

Olfactory receptor 56B4 Rabbit pAb

CatalogNo: YT3390

Key Features

Host Species

- Rabbit

Reactivity

- Human

Applications

- WB,IF,ELISA

MW

- 34kD (Observed)

Isotype

- IgG

Recommended Dilution Ratios

WB 1:500-1:2000

IF 1:200-1:1000

ELISA 1:5000

Not yet tested in other applications.

Storage

Storage*

-15°C to -25°C/1 year(Do not lower than -25°C)

Formulation

Liquid in PBS containing 50% glycerol, 0.5% BSA and 0.02% sodium azide.

Basic Information

Clonality

Polyclonal

Immunogen Information

Immunogen

The antiserum was produced against synthesized peptide derived from human OR56B4. AA range:241-290

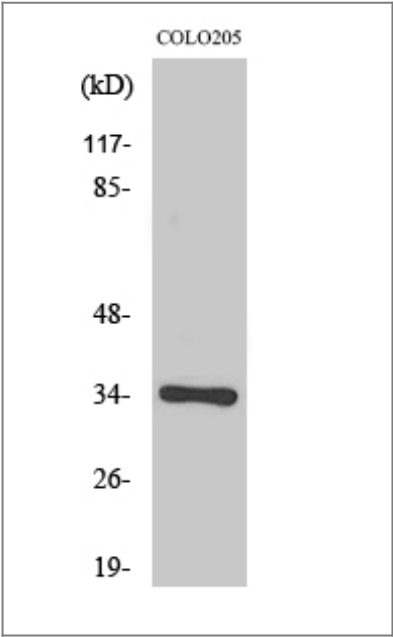
Specificity

Olfactory receptor 56B4 Polyclonal Antibody detects endogenous levels of Olfactory receptor 56B4 protein.

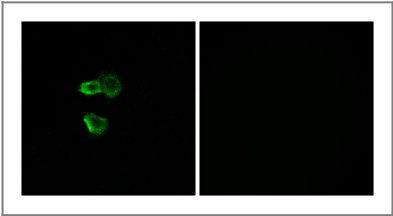
| Target Information

| | | | |
|-----------------------|---|--------------------------|--------------------------|
| Gene name | OR56B4 | | |
| Protein Name | Olfactory receptor 56B4 | | |
| | Organism | Gene ID | UniProt ID |
| | Human | 196335 ; | Q8NH76 ; |
| Cellular Localization | Cell membrane; Multi-pass membrane protein. | | |
| Function | Function:Odorant receptor .,similarity:Belongs to the G-protein coupled receptor 1 family., | | |

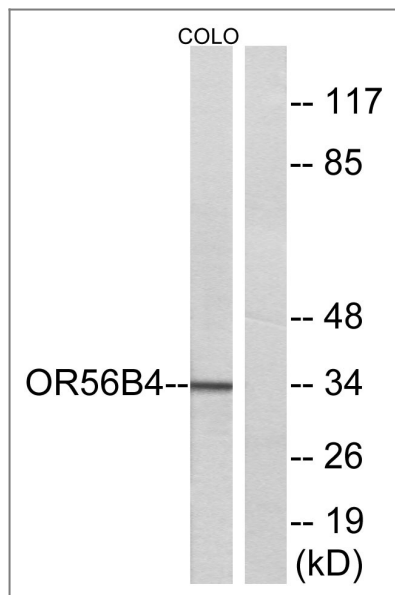
| Validation Data



Western Blot analysis of various cells using Olfactory receptor 56B4 Polyclonal Antibody



Immunofluorescence analysis of MCF7 cells, using OR56B4 Antibody. The picture on the right is blocked with the synthesized peptide.



Western blot analysis of lysates from COLO cells, using OR56B4 Antibody.
The lane on the right is blocked with the synthesized peptide.

Contact information

Orders: order.cn@immunoway.com
 Support: support.cn@immunoway.com
 Telephone: 400-8787-807(China)
 Website: <http://www.immunoway.com.cn>
 Address: 2200 Ringwood Ave San Jose, CA 95131 USA



Please scan the QR code
to access additional
product information:
**Olfactory receptor
56B4 Rabbit pAb**

For Research Use Only. Not for Use in Diagnostic Procedures.

[Antibody](#) | [ELISA Kits](#) | [Protein](#) | [Reagents](#)