

## Olfactory receptor 56B1 Rabbit pAb

CatalogNo: YT3389

### Key Features

#### Host Species

- Rabbit

#### Reactivity

- Human

#### Applications

- IF,ELISA

#### MW

- 36kD (Calculated)

#### Isotype

- IgG

### Recommended Dilution Ratios

IF 1:200-1:1000

ELISA 1:10000

Not yet tested in other applications

### Storage

**Storage\*** -15°C to -25°C/1 year(Do not lower than -25°C)

**Formulation** Liquid in PBS containing 50% glycerol, 0.5% BSA and 0.02% sodium azide.

### Basic Information

**Clonality** Polyclonal

### Immunogen Information

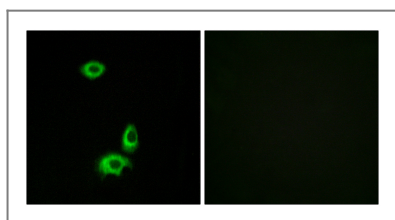
**Immunogen** The antiserum was produced against synthesized peptide derived from human OR56B1. AA range:161-210

**Specificity** Olfactory receptor 56B1 Polyclonal Antibody detects endogenous levels of Olfactory receptor 56B1 protein.

### Target Information

<b>Gene name</b>	OR56B1		
<b>Protein Name</b>	Olfactory receptor 56B1		
	<b>Organism</b>	<b>Gene ID</b>	<b>UniProt ID</b>
	Human	<a href="#">387748;</a>	<a href="#">Q8NGI3;</a>
<b>Cellular Localization</b>	Cell membrane; Multi-pass membrane protein.		
<b>Tissue specificity</b>	Thymus,		
<b>Function</b>	Caution:It is uncertain whether Met-1 or Met-4 is the initiator.,Function:Odorant receptor .,similarity:Belongs to the G-protein coupled receptor 1 family.,		

## | Validation Data



Immunofluorescence analysis of HUVEC cells, using OR56B1 Antibody. The picture on the right is blocked with the synthesized peptide.

## | Contact information

Orders: order.cn@immunoway.com  
 Support: support.cn@immunoway.com  
 Telephone: 400-8787-807(China)  
 Website: <http://www.immunoway.com.cn>  
 Address: 2200 Ringwood Ave San Jose, CA 95131 USA



Please scan the QR code to access additional product information:  
**Olfactory receptor 56B1 Rabbit pAb**

For Research Use Only. Not for Use in Diagnostic Procedures.

[Antibody](#) | [ELISA Kits](#) | [Protein](#) | [Reagents](#)