

Olfactory receptor 51B2 Rabbit pAb

CatalogNo: YT3359

Key Features

Host Species

- Rabbit

Reactivity

- Human

Applications

- WB,IF,ELISA

MW

- 38kD (Observed)

Isotype

- IgG

Storage

Storage* -15°C to -25°C/1 year(Do not lower than -25°C)

Formulation Liquid in PBS containing 50% glycerol, 0.5% BSA and 0.02% sodium azide.

Recommended Dilution Ratios

WB 1:500-1:2000

IF 1:200-1:1000

ELISA 1:10000

Not yet tested in other applications.

Basic Information

Clonality Polyclonal

Immunogen Information

Immunogen The antiserum was produced against synthesized peptide derived from human OR51B2. AA range:196-245

Specificity Olfactory receptor 51B2 Polyclonal Antibody detects endogenous levels of Olfactory receptor 51B2 protein.

Target Information

Gene name OR51B2

Protein Name Olfactory receptor 51B2

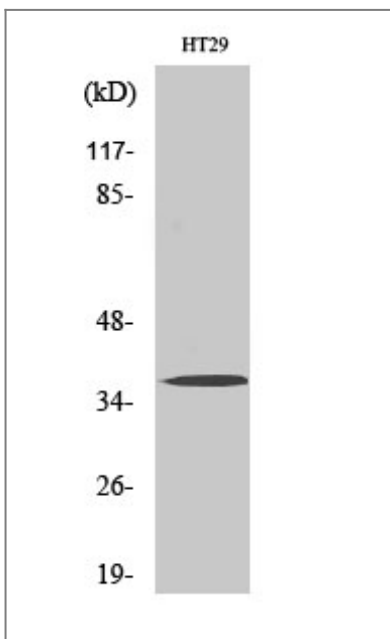
Organism	Gene ID	UniProt ID
Human	79345 ;	Q9Y5P1 ;

Cellular Localization Cell membrane; Multi-pass membrane protein.

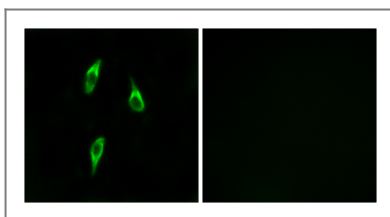
Tissue specificity Brain,

Function Function:Odorant receptor .,similarity:Belongs to the G-protein coupled receptor 1 family.,

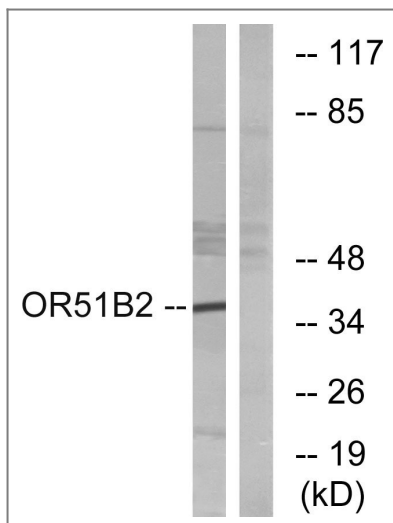
Validation Data



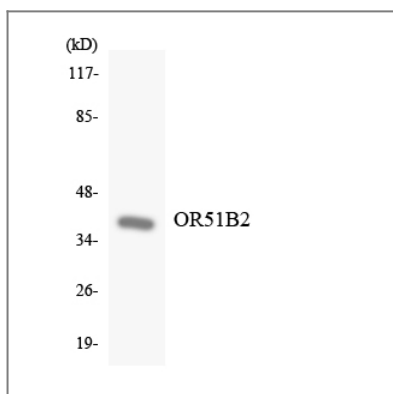
Western Blot analysis of various cells using Olfactory receptor 51B2 Polyclonal Antibody diluted at 1:500



Immunofluorescence analysis of LOVO cells, using OR51B2 Antibody. The picture on the right is blocked with the synthesized peptide.



Western blot analysis of lysates from HT-29 cells, using OR51B2 Antibody. The lane on the right is blocked with the synthesized peptide.



Western blot analysis of the lysates from K562 cells using OR51B2 antibody.

Contact information

Orders: order.cn@immunoway.com
 Support: support.cn@immunoway.com
 Telephone: 400-8787-807(China)
 Website: <http://www.immunoway.com.cn>
 Address: 2200 Ringwood Ave San Jose, CA 95131 USA



Please scan the QR code to access additional product information:
Olfactory receptor 51B2 Rabbit pAb

For Research Use Only. Not for Use in Diagnostic Procedures.

[Antibody](#) | [ELISA Kits](#) | [Protein](#) | [Reagents](#)