

Olfactory receptor 4F6 Rabbit pAb

CatalogNo: YT3345

| Key Features

Host Species

- Rabbit

Reactivity

- Human

Applications

- WB,IF,ELISA

MW

- 35kD (Observed)

Isotype

- IgG

| Recommended Dilution Ratios

WB 1:500-1:2000

IF 1:200-1:1000

ELISA 1:20000

Not yet tested in other applications.

| Storage

Storage*

-15°C to -25°C/1 year(Do not lower than -25°C)

Formulation

Liquid in PBS containing 50% glycerol, 0.5% BSA and 0.02% sodium azide.

| Basic Information

Clonality

Polyclonal

| Immunogen Information

Immunogen

The antiserum was produced against synthesized peptide derived from human OR4F6.
AA range:55-104

Specificity

Olfactory receptor 4F6 Polyclonal Antibody detects endogenous levels of Olfactory receptor 4F6 protein.

Target Information

Gene name OR4F6

Protein Name Olfactory receptor 4F6

Organism

Gene ID

UniProt ID

Human

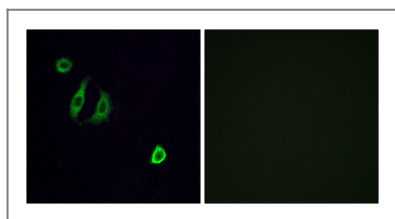
[390648](#);

[Q8NGB9](#);

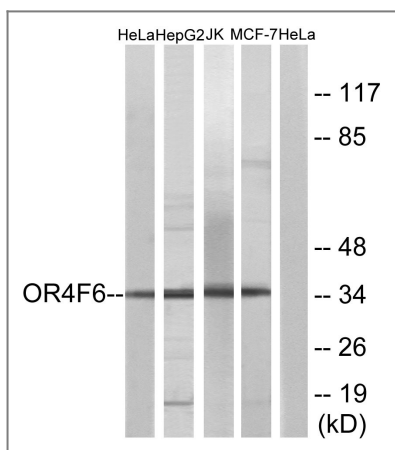
Cellular Localization Cell membrane; Multi-pass membrane protein.

Function Function:Odorant receptor .,similarity:Belongs to the G-protein coupled receptor 1 family.,

Validation Data



Immunofluorescence analysis of A549 cells, using OR4F6 Antibody. The picture on the right is blocked with the synthesized peptide.



Western blot analysis of lysates from HeLa, Jurkat, HepG2, and MCF-7 cells, using OR4F6 Antibody. The lane on the right is blocked with the synthesized peptide.

Contact information

Orders: order.cn@immunoway.com
Support: support.cn@immunoway.com
Telephone: 400-8787-807(China)
Website: <http://www.immunoway.com.cn>
Address: 2200 Ringwood Ave San Jose, CA 95131 USA



Please scan the QR code to access additional product information:
Olfactory receptor 4F6 Rabbit pAb

