

Olfactory receptor 4A4/47 Rabbit pAb

CatalogNo: YT3332

| Key Features

Host Species

- Rabbit

Reactivity

- Human

Applications

- WB,IF,ELISA

MW

- 34kD (Observed)

Isotype

- IgG

| Recommended Dilution Ratios

WB 1:500-1:2000

IF 1:200-1:1000

ELISA 1:20000

Not yet tested in other applications.

| Storage

Storage*

-15°C to -25°C/1 year(Do not lower than -25°C)

Formulation

Liquid in PBS containing 50% glycerol, 0.5% BSA and 0.02% sodium azide.

| Basic Information

Clonality

Polyclonal

| Immunogen Information

Immunogen

The antiserum was produced against synthesized peptide derived from human OR4A4. AA range:250-299

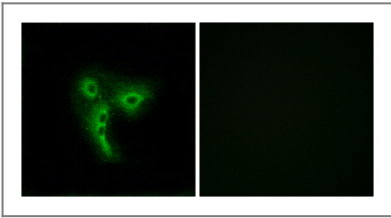
Specificity

Olfactory receptor 4A4/47 Polyclonal Antibody detects endogenous levels of Olfactory receptor 4A4/47 protein.

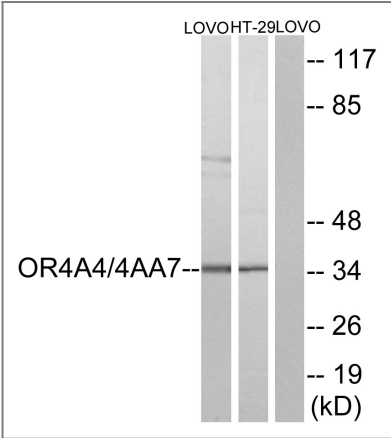
Target Information

Gene name	OR4A4/OR4A7		
Protein Name	Putative olfactory receptor 4A4/47		
	Organism	Gene ID	UniProt ID
	Human	403253 ;	Q8NGN8 ; Q6IF82 ;
Cellular Localization	Cell membrane; Multi-pass membrane protein.		
Function	Caution:Could be the product of a pseudogene.,Function:Odorant receptor .,similarity:Belongs to the G-protein coupled receptor 1 family.,		

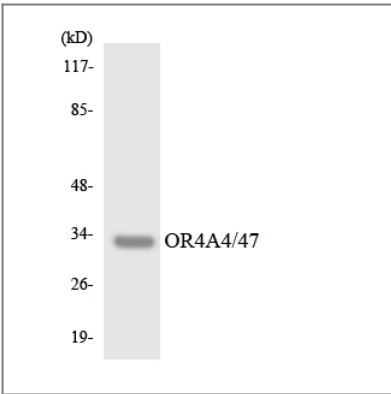
Validation Data



Immunofluorescence analysis of A549 cells, using OR4A4/4A47 Antibody. The picture on the right is blocked with the synthesized peptide.



Western blot analysis of lysates from LOVO cells and HT29 cells, using OR4A4/4A47 Antibody. The lane on the right is blocked with the synthesized peptide.



Western blot analysis of the lysates from HT-29 cells using OR4A4/47 antibody.

| Contact information

Orders: order.cn@immunoway.com
Support: support.cn@immunoway.com
Telephone: 400-8787-807(China)
Website: <http://www.immunoway.com.cn>
Address: 2200 Ringwood Ave San Jose, CA 95131 USA



Please scan the QR code
to access additional
product information:

**Olfactory receptor
4A4/47 Rabbit pAb**

For Research Use Only. Not for Use in Diagnostic Procedures.

[Antibody](#) | [ELISA Kits](#) | [Protein](#) | [Reagents](#)