

## Olfactory receptor 3A2 Rabbit pAb

CatalogNo: YT3328

### Key Features

#### Host Species

- Rabbit

#### Reactivity

- Human

#### Applications

- WB,IF,ELISA

#### MW

- 35kD (Observed)

#### Isotype

- IgG

### Recommended Dilution Ratios

**WB 1:500-1:2000**

**IF 1:200-1:1000**

**ELISA 1:10000**

**Not yet tested in other applications.**

### Storage

#### Storage\*

-15°C to -25°C/1 year(Do not lower than -25°C)

#### Formulation

Liquid in PBS containing 50% glycerol, 0.5% BSA and 0.02% sodium azide.

### Basic Information

#### Clonality

Polyclonal

### Immunogen Information

#### Immunogen

The antiserum was produced against synthesized peptide derived from human OR3A2. AA range:241-290

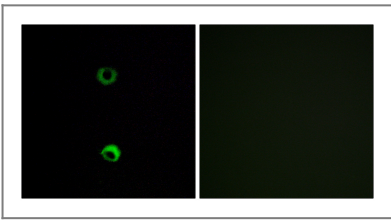
#### Specificity

Olfactory receptor 3A2 Polyclonal Antibody detects endogenous levels of Olfactory receptor 3A2 protein.

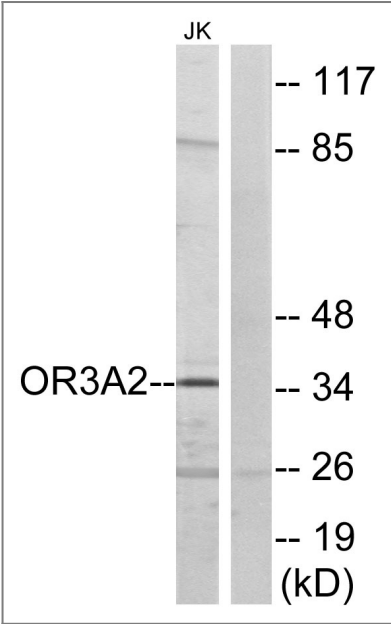
## | Target Information

Gene name	OR3A2		
Protein Name	Olfactory receptor 3A2		
	Organism	Gene ID	UniProt ID
	Human	<a href="#">4995</a> ;	<a href="#">P47893</a> ;
Cellular Localization	Cell membrane; Multi-pass membrane protein.		
Function	Caution:It is uncertain whether Met-1 or Met-7 is the initiator.,Function:Odorant receptor .,similarity:Belongs to the G-protein coupled receptor 1 family.,		

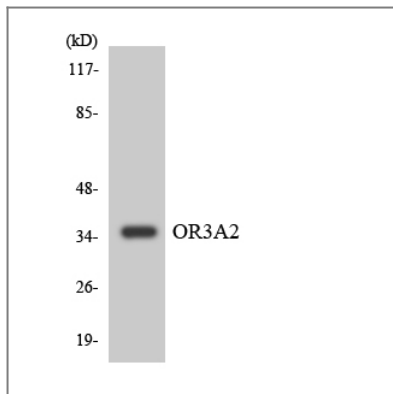
## | Validation Data



Immunofluorescence analysis of MCF7 cells, using OR3A2 Antibody. The picture on the right is blocked with the synthesized peptide.



Western blot analysis of lysates from Jurkat cells, using OR3A2 Antibody. The lane on the right is blocked with the synthesized peptide.



Western blot analysis of the lysates from COLO205 cells using OR3A2 antibody.

## Contact information

Orders: [order.cn@immunoway.com](mailto:order.cn@immunoway.com)  
Support: [support.cn@immunoway.com](mailto:support.cn@immunoway.com)  
Telephone: 400-8787-807(China)  
Website: <http://www.immunoway.com.cn>  
Address: 2200 Ringwood Ave San Jose, CA 95131 USA



Please scan the QR code to access additional product information:

**Olfactory receptor  
3A2 Rabbit pAb**

For Research Use Only. Not for Use in Diagnostic Procedures.

[Antibody](#) | [ELISA Kits](#) | [Protein](#) | [Reagents](#)