

Olfactory receptor 2T5/2T29 Rabbit pAb

CatalogNo: YT3324

Key Features

Host Species

- Rabbit

Reactivity

- Human

Applications

- WB,IF,ELISA

MW

- 34kD (Observed)

Isotype

- IgG

Recommended Dilution Ratios

WB 1:500-1:2000

IF 1:200-1:1000

ELISA 1:20000

Not yet tested in other applications.

Storage

Storage*

-15°C to -25°C/1 year(Do not lower than -25°C)

Formulation

Liquid in PBS containing 50% glycerol, 0.5% BSA and 0.02% sodium azide.

Basic Information

Clonality

Polyclonal

Immunogen Information

Immunogen

The antiserum was produced against synthesized peptide derived from human OR2T5/2T29. AA range:66-115

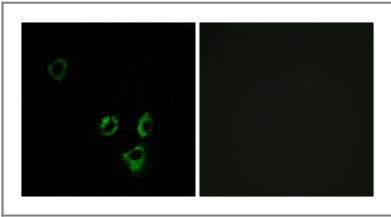
Specificity

Olfactory receptor 2T5/2T29 Polyclonal Antibody detects endogenous levels of Olfactory receptor 2T5/2T29 protein.

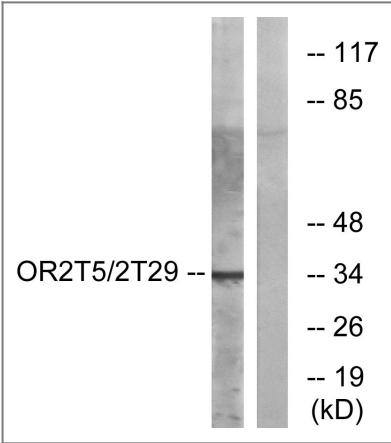
Target Information

Gene name	OR2T5/OR2T29		
Protein Name	Olfactory receptor 2T5/29		
	Organism	Gene ID	UniProt ID
	Human	401993 ;	Q8NH02 ; Q6IEZ7 ;
Cellular Localization	Cell membrane; Multi-pass membrane protein.		
Function	Function:Odorant receptor .,similarity:Belongs to the G-protein coupled receptor 1 family.,		

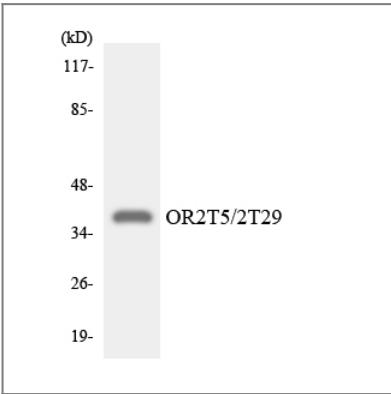
Validation Data



Immunofluorescence analysis of MCF7 cells, using OR2T5/2T29 Antibody. The picture on the right is blocked with the synthesized peptide.



Western blot analysis of lysates from K562 cells, using OR2T5/2T29 Antibody. The lane on the right is blocked with the synthesized peptide.



Western blot analysis of the lysates from HeLa cells using OR2T5/2T29 antibody.

| Contact information

Orders: order.cn@immunoway.com
Support: support.cn@immunoway.com
Telephone: 400-8787-807(China)
Website: <http://www.immunoway.com.cn>
Address: 2200 Ringwood Ave San Jose, CA 95131 USA



Please scan the QR code
to access additional
product information:

**Olfactory receptor
2T5/2T29 Rabbit
pAb**

For Research Use Only. Not for Use in Diagnostic Procedures.

[Antibody](#) | [ELISA Kits](#) | [Protein](#) | [Reagents](#)