

## Olfactory receptor 2T2/35 Rabbit pAb

CatalogNo: YT3320

Orthogonal Validated 

### Key Features

#### Host Species

- Rabbit

#### Reactivity

- Human

#### Applications

- WB,IF,ELISA

#### MW

- 34kD (Observed)

#### Isotype

- IgG

### Recommended Dilution Ratios

**WB 1:500-1:2000****IF 1:200-1:1000****ELISA 1:5000****Not yet tested in other applications.**

### Storage

**Storage\*** -15°C to -25°C/1 year(Do not lower than -25°C)**Formulation** Liquid in PBS containing 50% glycerol, 0.5% BSA and 0.02% sodium azide.

### Basic Information

**Clonality** Polyclonal

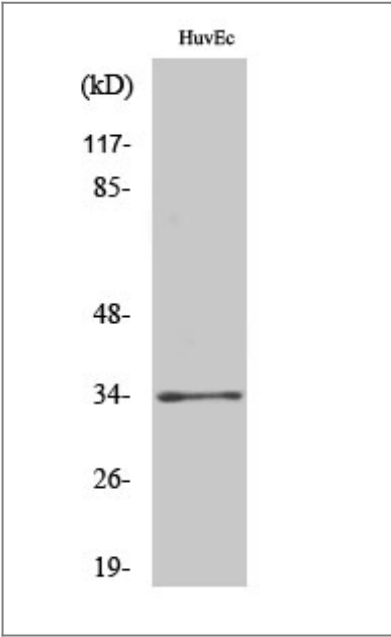
### Immunogen Information

**Immunogen** The antiserum was produced against synthesized peptide derived from human OR2T2/2T35. AA range:61-110**Specificity** Olfactory receptor 2T2/35 Polyclonal Antibody detects endogenous levels of Olfactory receptor 2T2/35 protein.

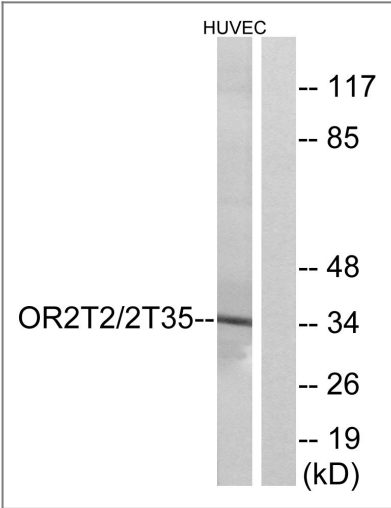
## Target Information

Gene name	OR2T2/OR2T35		
Protein Name	Olfactory receptor 2T2/35		
	Organism	Gene ID	UniProt ID
	Human	<a href="#">403244</a> ; <a href="#">401992</a> ;	<a href="#">Q8NGX2</a> ; <a href="#">Q6IF00</a> ;
Cellular Localization	Cell membrane; Multi-pass membrane protein.		
Function	Function:Odorant receptor .,similarity:Belongs to the G-protein coupled receptor 1 family.,		

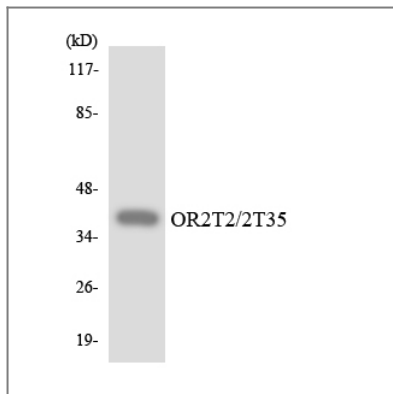
## Validation Data



Western Blot analysis of various cells using Olfactory receptor 2T2/35 Polyclonal Antibody diluted at 1:500



Western blot analysis of lysates from HUVEC cells, using OR2T2/2T35 Antibody. The lane on the right is blocked with the synthesized peptide.



Western blot analysis of the lysates from HepG2 cells using OR2T2/2T35 antibody.

## Contact information

Orders: [order.cn@immunoway.com](mailto:order.cn@immunoway.com)  
Support: [support.cn@immunoway.com](mailto:support.cn@immunoway.com)  
Telephone: 400-8787-807(China)  
Website: <http://www.immunoway.com.cn>  
Address: 2200 Ringwood Ave San Jose, CA 95131 USA



Please scan the QR code to access additional product information:

**Olfactory receptor  
2T2/35 Rabbit pAb**

For Research Use Only. Not for Use in Diagnostic Procedures.

[Antibody](#) | [ELISA Kits](#) | [Protein](#) | [Reagents](#)