

Olfactory receptor 2I1 Rabbit pAb

CatalogNo: YT3309

Key Features

Host Species

- Rabbit

Reactivity

- Human

Applications

- WB,IF,ELISA

MW

- 34kD (Observed)

Isotype

- IgG

Storage

Storage* -15°C to -25°C/1 year(Do not lower than -25°C)

Formulation Liquid in PBS containing 50% glycerol, 0.5% BSA and 0.02% sodium azide.

Recommended Dilution Ratios

WB 1:500-1:2000

IF 1:200-1:1000

ELISA 1:20000

Not yet tested in other applications.

Basic Information

Clonality Polyclonal

Immunogen Information

Immunogen The antiserum was produced against synthesized peptide derived from human OR2I1. AA range:261-310

Specificity Olfactory receptor 2I1 Polyclonal Antibody detects endogenous levels of Olfactory receptor 2I1 protein.

Target Information

Gene name OR211P

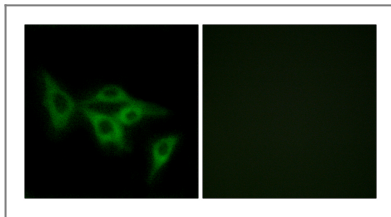
Protein Name Putative olfactory receptor 211

Organism	Gene ID	UniProt ID
Human	442197 ;	Q8NGU4 ;

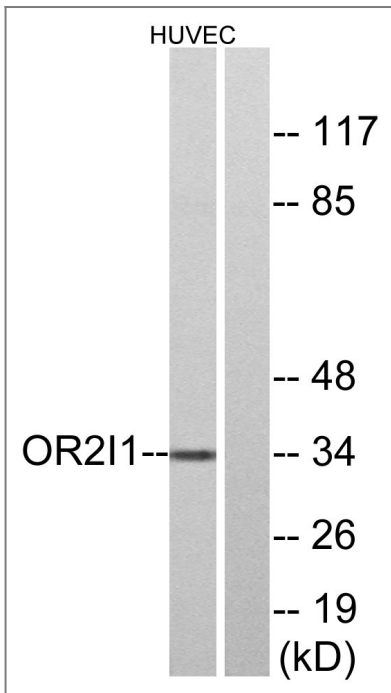
Cellular Localization Cell membrane; Multi-pass membrane protein.

Function Caution:Could be the product of a pseudogene.,Function:Odorant receptor
.,similarity:Belongs to the G-protein coupled receptor 1 family.,

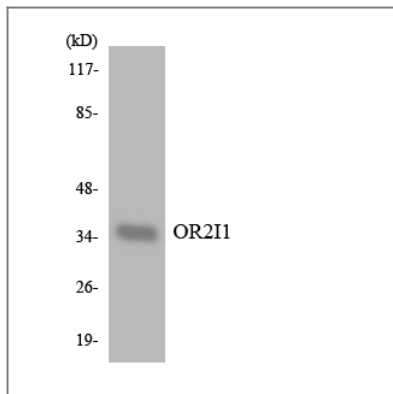
Validation Data



Immunofluorescence analysis of LOVO cells, using OR211 Antibody. The picture on the right is blocked with the synthesized peptide.



Western blot analysis of lysates from HUVEC cells, using OR211 Antibody. The lane on the right is blocked with the synthesized peptide.



Western blot analysis of the lysates from HUVEC cells using OR2I1 antibody.

Contact information

Orders: order.cn@immunoway.com
Support: support.cn@immunoway.com
Telephone: 400-8787-807(China)
Website: <http://www.immunoway.com.cn>
Address: 2200 Ringwood Ave San Jose, CA 95131 USA



Please scan the QR code to access additional product information:

**Olfactory receptor
2I1 Rabbit pAb**

For Research Use Only. Not for Use in Diagnostic Procedures.

[Antibody](#) | [ELISA Kits](#) | [Protein](#) | [Reagents](#)