

Olfactory receptor 2C3 Rabbit pAb

CatalogNo: YT3302

Key Features

Host Species

- Rabbit

Reactivity

- Human

Applications

- WB,IF,ELISA

MW

- 36kD (Observed)

Isotype

- IgG

Recommended Dilution Ratios

WB 1:500-1:2000

IF 1:200-1:1000

ELISA 1:10000

Not yet tested in other applications.

Storage

Storage*

-15°C to -25°C/1 year(Do not lower than -25°C)

Formulation

Liquid in PBS containing 50% glycerol, 0.5% BSA and 0.02% sodium azide.

Basic Information

Clonality

Polyclonal

Immunogen Information

Immunogen

The antiserum was produced against synthesized peptide derived from human OR2C3. AA range:231-280

Specificity

Olfactory receptor 2C3 Polyclonal Antibody detects endogenous levels of Olfactory receptor 2C3 protein.

| Target Information

Gene name OR2C3

Protein Name Olfactory receptor 2C3

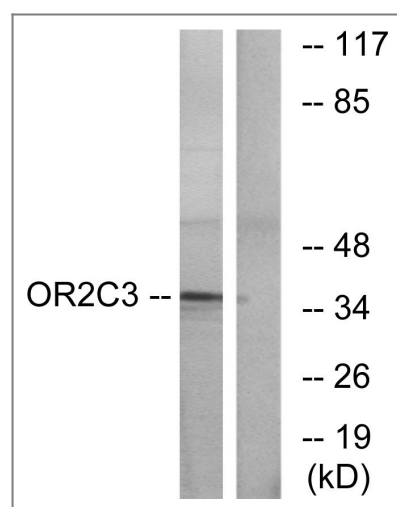
Organism	Gene ID	UniProt ID
Human	81472 ;	Q8N628 ;

Cellular Localization Cell membrane; Multi-pass membrane protein.

Tissue specificity Melanoma,

Function Caution:It is uncertain whether Met-1 or Met-2 is the initiator.,Function:Odorant receptor
.,similarity:Belongs to the G-protein coupled receptor 1 family.,

| Validation Data



Western blot analysis of lysates from COLO cells, using OR2C3 Antibody. The lane on the right is blocked with the synthesized peptide.

| Contact information

Orders: order.cn@immunoway.com
Support: support.cn@immunoway.com
Telephone: 400-8787-807(China)
Website: <http://www.immunoway.com.cn>
Address: 2200 Ringwood Ave San Jose, CA 95131 USA



Please scan the QR code to access additional product information:
Olfactory receptor 2C3 Rabbit pAb

