

## Olfactory receptor 1D2 Rabbit pAb

CatalogNo: YT3282

### Key Features

**Host Species**

- Rabbit

**Reactivity**

- Human

**Applications**

- WB,IF,ELISA

**MW**

- 40kD (Observed)

**Isotype**

- IgG

### Recommended Dilution Ratios

**WB 1:500-1:2000****IF 1:200-1:1000****ELISA 1:20000****Not yet tested in other applications.**

### Storage

**Storage\***

-15°C to -25°C/1 year(Do not lower than -25°C)

**Formulation**

Liquid in PBS containing 50% glycerol, 0.5% BSA and 0.02% sodium azide.

### Basic Information

**Clonality**

Polyclonal

### Immunogen Information

**Immunogen**

The antiserum was produced against synthesized peptide derived from human OR1D2. AA range:201-250

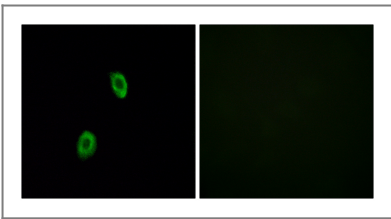
**Specificity**

Olfactory receptor 1D2 Polyclonal Antibody detects endogenous levels of Olfactory receptor 1D2 protein.

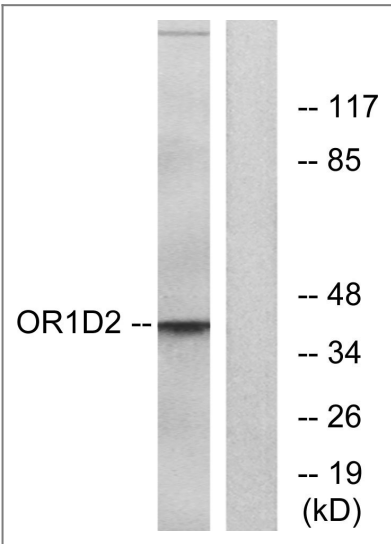
## | Target Information

Gene name	OR1D2		
Protein Name	Olfactory receptor 1D2		
	Organism	Gene ID	UniProt ID
	Human	<a href="#">4991</a> ;	<a href="#">P34982</a> ;
Cellular Localization	Cell membrane ; Multi-pass membrane protein . In spermatazoa is localized in the midpiece and is translocated to the head region upon receptor stimulation with bourgeonal.		
Tissue specificity	Expressed in testis. Expressed in spermatozoa (at protein level). Expressed in olfactory epithelium.		
Function	Function:Odorant receptor .,similarity:Belongs to the G-protein coupled receptor 1 family.,		

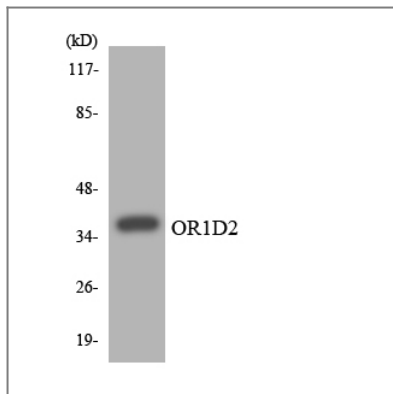
## | Validation Data



Immunofluorescence analysis of HUVEC cells, using OR1D2 Antibody. The picture on the right is blocked with the synthesized peptide.



Western blot analysis of lysates from Jurkat cells, using OR1D2 Antibody. The lane on the right is blocked with the synthesized peptide.



Western blot analysis of the lysates from HepG2 cells using OR1D2 antibody.

## Contact information

Orders: [order.cn@immunoway.com](mailto:order.cn@immunoway.com)  
Support: [support.cn@immunoway.com](mailto:support.cn@immunoway.com)  
Telephone: 400-8787-807(China)  
Website: <http://www.immunoway.com.cn>  
Address: 2200 Ringwood Ave San Jose, CA 95131 USA



Please scan the QR code to access additional product information:

**Olfactory receptor  
1D2 Rabbit pAb**

For Research Use Only. Not for Use in Diagnostic Procedures.

[Antibody](#) | [ELISA Kits](#) | [Protein](#) | [Reagents](#)