

## Olfactory receptor 10K1/2 Rabbit pAb

CatalogNo: YT3262

### Key Features

#### Host Species

- Rabbit

#### Reactivity

- Human

#### Applications

- WB,IF,ELISA

#### MW

- 35kD (Observed)

#### Isotype

- IgG

### Recommended Dilution Ratios

**WB 1:500-1:2000**

**IF 1:200-1:1000**

**ELISA 1:20000**

**Not yet tested in other applications.**

### Storage

#### Storage\*

-15°C to -25°C/1 year(Do not lower than -25°C)

#### Formulation

Liquid in PBS containing 50% glycerol, 0.5% BSA and 0.02% sodium azide.

### Basic Information

#### Clonality

Polyclonal

### Immunogen Information

#### Immunogen

The antiserum was produced against synthesized peptide derived from human OR10K1/10K2. AA range:56-105

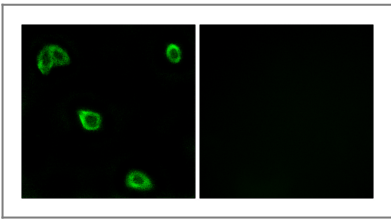
#### Specificity

Olfactory receptor 10K1/2 Polyclonal Antibody detects endogenous levels of Olfactory receptor 10K1/2 protein.

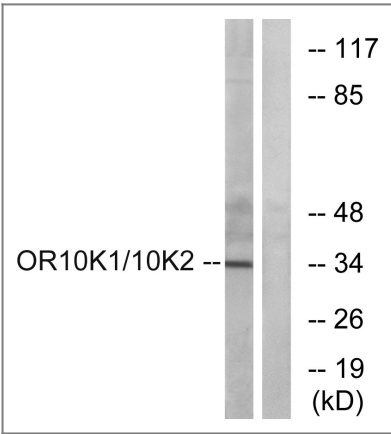
## | Target Information

Gene name	OR10K1/OR10K2		
Protein Name	Olfactory receptor 10K1/2		
	Organism	Gene ID	UniProt ID
	Human	<a href="#">391109</a> ; <a href="#">391107</a> ;	<a href="#">Q8NGX5</a> ; <a href="#">Q6IF99</a> ;
Cellular Localization	Cell membrane; Multi-pass membrane protein.		
Function	Function:Odorant receptor .,similarity:Belongs to the G-protein coupled receptor 1 family.,		

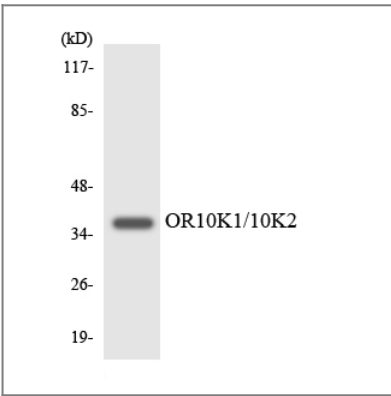
## | Validation Data



Immunofluorescence analysis of LOVO cells, using OR10K1/10K2 Antibody. The picture on the right is blocked with the synthesized peptide.



Western blot analysis of lysates from HepG2 cells, using OR10K1/10K2 Antibody. The lane on the right is blocked with the synthesized peptide.



Western blot analysis of the lysates from HUVECcells using OR10K1/10K2 antibody.

## | Contact information

Orders: order.cn@immunoway.com  
Support: support.cn@immunoway.com  
Telephone: 400-8787-807(China)  
Website: <http://www.immunoway.com.cn>  
Address: 2200 Ringwood Ave San Jose, CA 95131 USA



Please scan the QR code  
to access additional  
product information:

**Olfactory receptor  
10K1/2 Rabbit pAb**

---

For Research Use Only. Not for Use in Diagnostic Procedures.

[Antibody](#) | [ELISA Kits](#) | [Protein](#) | [Reagents](#)