

# Olfactory receptor 10A7 Rabbit pAb

CatalogNo: YT3244

## Key Features

### Host Species

- Rabbit

### Reactivity

- Human

### Applications

- WB, ELISA

### MW

- 36kD (Observed)

### Isotype

- IgG

## Recommended Dilution Ratios

**WB 1:500-1:2000**

**ELISA 1:20000**

**Not yet tested in other applications.**

## Storage

**Storage\*** -15°C to -25°C/1 year (Do not lower than -25°C)

**Formulation** Liquid in PBS containing 50% glycerol, 0.5% BSA and 0.02% sodium azide.

## Basic Information

**Clonality** Polyclonal

## Immunogen Information

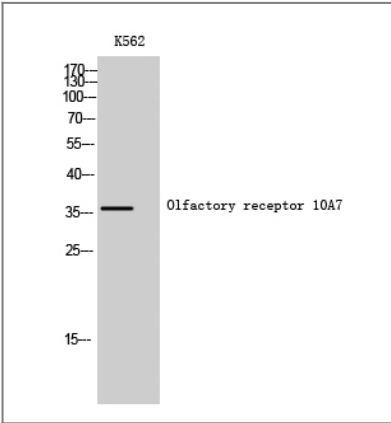
**Immunogen** The antiserum was produced against synthesized peptide derived from human OR10A7. AA range: 234-283

**Specificity** Olfactory receptor 10A7 Polyclonal Antibody detects endogenous levels of Olfactory receptor 10A7 protein.

## Target Information

Gene name	OR10A7		
Protein Name	Olfactory receptor 10A7		
	Organism	Gene ID	UniProt ID
	Human	<a href="#">121364</a> ;	<a href="#">Q8NGE5</a> ;
Cellular Localization	Cell membrane; Multi-pass membrane protein.		
Function	Function:Odorant receptor .,similarity:Belongs to the G-protein coupled receptor 1 family.,		

## Validation Data



Western Blot analysis of K562 cells using Olfactory receptor 10A7 Polyclonal Antibody

## Contact information

Orders: order.cn@immunoway.com  
Support: support.cn@immunoway.com  
Telephone: 400-8787-807(China)  
Website: <http://www.immunoway.com.cn>  
Address: 2200 Ringwood Ave San Jose, CA 95131 USA



Please scan the QR code to access additional product information:  
**Olfactory receptor 10A7 Rabbit pAb**

For Research Use Only. Not for Use in Diagnostic Procedures.

[Antibody](#) | [ELISA Kits](#) | [Protein](#) | [Reagents](#)