

NY-CO-8 Rabbit pAb

CatalogNo: YT3216

Key Features

Host Species

- Rabbit

Reactivity

- Human, Mouse

Applications

- IHC, IF, ELISA

MW

- 83kD (Calculated)

Isotype

- IgG

Recommended Dilution Ratios

IHC 1:100-1:300

ELISA 1:20000

IF 1:50-200

Storage

Storage*

-15°C to -25°C/1 year (Do not lower than -25°C)

Formulation

Liquid in PBS containing 50% glycerol, 0.5% BSA and 0.02% sodium azide.

Basic Information

Clonality

Polyclonal

Immunogen Information

Immunogen

Synthesized peptide derived from NY-CO-8 . at AA range: 520-600

Specificity

NY-CO-8 Polyclonal Antibody detects endogenous levels of NY-CO-8 protein.

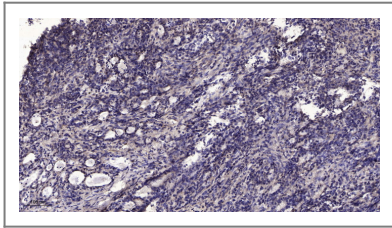
Target Information

Gene name

SDCCAG8

Protein Name	Serologically defined colon cancer antigen 8		
	Organism	Gene ID	UniProt ID
	Human	10806;	Q86SQ7;
	Mouse	76816;	Q80UF4;
Cellular Localization	Cytoplasm, cytoskeleton, microtubule organizing center, centrosome, centriole. Cytoplasm, cytoskeleton, microtubule organizing center, centrosome . Cytoplasm, cytoskeleton, cilium basal body . Cell junction. Located at the distal ends of both centrioles and colocalizes to centrosomes throughout the cell cycle.; [Isoform 2]: Cytoplasm.		
Tissue specificity	Expressed in thymus, prostate, testis, ovary, small intestine, colon, mucosa, colon and renal cancer tumors.		
Function	subunit:Homodimer.,tissue specificity:Expressed in thymus, prostate, testis, ovary, small intestine, colon, mucosa, colon and renal cancer tumors.,		

Validation Data



Immunohistochemical analysis of paraffin-embedded human Gastric adenocarcinoma. 1, Antibody was diluted at 1:200(4° overnight). 2, Tris-EDTA,pH9.0 was used for antigen retrieval. 3,Secondary antibody was diluted at 1:200(room temperature, 45min).

Contact information

Orders: order.cn@immunoway.com
 Support: support.cn@immunoway.com
 Telephone: 400-8787-807(China)
 Website: <http://www.immunoway.com.cn>
 Address: 2200 Ringwood Ave San Jose, CA 95131 USA



Please scan the QR code to access additional product information:
NY-CO-8 Rabbit pAb

For Research Use Only. Not for Use in Diagnostic Procedures.

[Antibody](#) | [ELISA Kits](#) | [Protein](#) | [Reagents](#)