

NTR1 Rabbit pAb

CatalogNo: YT3203

| Key Features

Host Species

- Rabbit

Reactivity

- Human, Mouse

Applications

- WB, IHC, IF, ELISA

MW

- 46kD (Observed)

Isotype

- IgG

| Recommended Dilution Ratios

WB 1:500-1:2000

IHC 1:100-1:300

IF 1:200-1:1000

ELISA 1:5000

Not yet tested in other applications.

| Storage

Storage* -15°C to -25°C/1 year (Do not lower than -25°C)

Formulation Liquid in PBS containing 50% glycerol, 0.5% BSA and 0.02% sodium azide.

| Basic Information

Clonality Polyclonal

| Immunogen Information

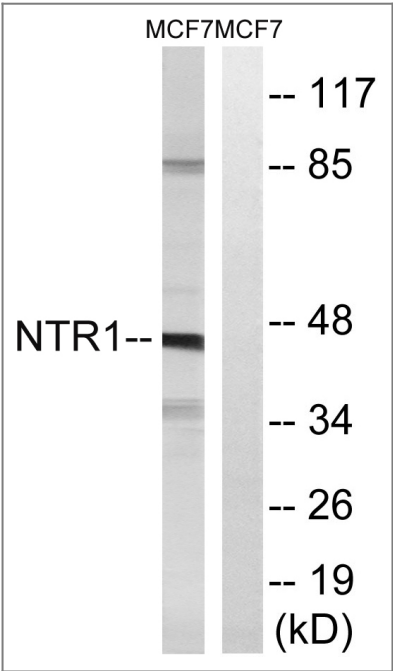
Immunogen The antiserum was produced against synthesized peptide derived from human NTR1. AA range: 181-230

Specificity NTR1 Polyclonal Antibody detects endogenous levels of NTR1 protein.

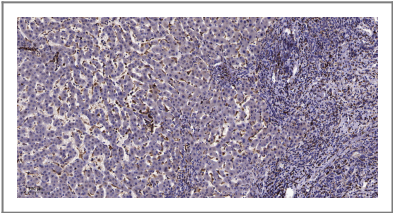
| Target Information

Gene name	NTSR1		
Protein Name	Neurotensin receptor type 1		
	Organism	Gene ID	UniProt ID
	Human	4923 ;	P30989 ;
	Mouse	18216 ;	O88319 ;
Cellular Localization	Cell membrane ; Multi-pass membrane protein . Membrane raft . Palmitoylation is required for localization at CAV1-enriched membrane rafts. .		
Tissue specificity	Expressed in prostate (at protein level). Detected in colon and peripheral blood mononuclear cells. Detected at very low levels in brain.		
Function	Function:Receptor for the tridecapeptide neurotensin. It is associated with G proteins that activate a phosphatidylinositol-calcium second messenger system.,online information:Neurotensin receptor entry,similarity:Belongs to the G-protein coupled receptor 1 family.,		

| Validation Data



Western blot analysis of lysates from MCF7 cells, using NTR1 Antibody. The lane on the right is blocked with the synthesized peptide.



Immunohistochemical analysis of paraffin-embedded human liver cancer. 1, Antibody was diluted at 1:200(4° overnight). 2, Tris-EDTA,pH9.0 was used for antigen retrieval. 3,Secondary antibody was diluted at 1:200(room temperature, 45min).

| Contact information

Orders: order.cn@immunoway.com
Support: support.cn@immunoway.com
Telephone: 400-8787-807(China)
Website: <http://www.immunoway.com.cn>
Address: 2200 Ringwood Ave San Jose, CA 95131 USA



Please scan the QR code
to access additional
product information:
NTR1 Rabbit pAb

For Research Use Only. Not for Use in Diagnostic Procedures.

[Antibody](#) | [ELISA Kits](#) | [Protein](#) | [Reagents](#)