

Nox3 Rabbit pAb

CatalogNo: YT3175

Key Features

Host Species

- Rabbit

Reactivity

- Human, Mouse, Rat

Applications

- WB, IHC, IF, ELISA

MW

- 65kD (Observed)

Isotype

- IgG

Recommended Dilution Ratios

WB 1:500-1:2000

IHC 1:100-1:300

ELISA 1:40000

IF 1:50-200

Storage

Storage*

-15°C to -25°C/1 year (Do not lower than -25°C)

Formulation

Liquid in PBS containing 50% glycerol, 0.5% BSA and 0.02% sodium azide.

Basic Information

Clonality

Polyclonal

Immunogen Information

Immunogen

The antiserum was produced against synthesized peptide derived from human NOX3. AA range: 287-336

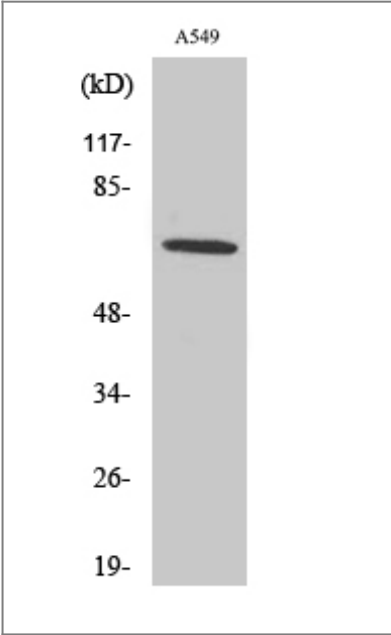
Specificity

Nox3 Polyclonal Antibody detects endogenous levels of Nox3 protein.

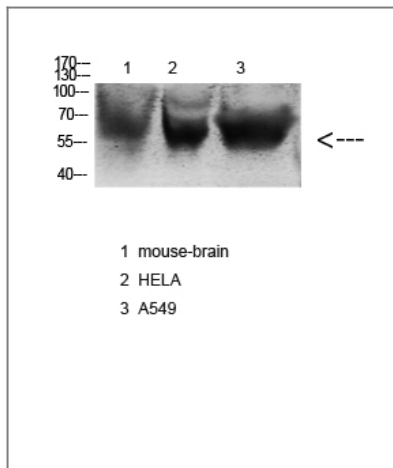
Target Information

Gene name	NOX3		
Protein Name	NADPH oxidase 3		
	Organism	Gene ID	UniProt ID
	Human	50508 ;	Q9HBY0 ;
	Mouse	224480 ;	Q672J9 ;
	Rat	292279 ;	Q672K1 ;
Cellular Localization	Membrane ; Multi-pass membrane protein .		
Tissue specificity	Fetal kidney,		
Function	developmental stage:Expressed in fetal kidney and to a lower extent in liver, lung and spleen.,enzyme regulation:Activated by the ototoxic drug cisplatin (By similarity). Activated by NOXO1. Cooperatively activated by NCF1 and NCF2 or NOXA1 in a phorbol 12-myristate 13-acetate (PMA)-dependent manner. Inhibited by diphenyleneiodonium chloride.,Function:NADPH oxidase which constitutively produces superoxide upon formation of a complex with CYBA/p22phox. Plays a role in the biogenesis of otoconia/otolith, which are crystalline structures of the inner ear involved in the perception of gravity.,similarity:Contains 1 FAD-binding FR-type domain.,similarity:Contains 1 ferric oxidoreductase domain.,subunit:Interacts with and stabilizes CYBA/p22phox.,		

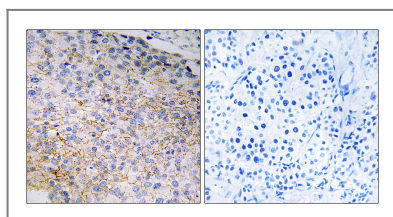
| Validation Data



Western Blot analysis of various cells using Nox3 Polyclonal Antibody



Western blot analysis of various cell Lysate, antibody was diluted at 1:1000. Secondary antibody(catalog#:RS0002) was diluted at 1:20000



Immunohistochemistry analysis of paraffin-embedded human breast carcinoma tissue, using NOX3 Antibody. The picture on the right is blocked with the synthesized peptide.

Contact information

Orders: order.cn@immunoway.com
Support: support.cn@immunoway.com
Telephone: 400-8787-807(China)
Website: <http://www.immunoway.com.cn>
Address: 2200 Ringwood Ave San Jose, CA 95131 USA



Please scan the QR code to access additional product information:
Nox3 Rabbit pAb

For Research Use Only. Not for Use in Diagnostic Procedures.

[Antibody](#) | [ELISA Kits](#) | [Protein](#) | [Reagents](#)