

## NMDAε4 Rabbit pAb

CatalogNo: YT3155

### Key Features

#### Host Species

- Rabbit

#### Reactivity

- Human, Mouse, Rat, Monkey

#### Applications

- WB, ELISA

#### MW

- 170kD (Observed)

#### Isotype

- IgG

### Recommended Dilution Ratios

**WB 1:500-1:2000**

**ELISA 1:40000**

**Not yet tested in other applications.**

### Storage

#### Storage\*

-15°C to -25°C/1 year (Do not lower than -25°C)

#### Formulation

Liquid in PBS containing 50% glycerol, 0.5% BSA and 0.02% sodium azide.

### Basic Information

#### Clonality

Polyclonal

### Immunogen Information

#### Immunogen

The antiserum was produced against synthesized peptide derived from human GRIN2D. AA range: 671-720

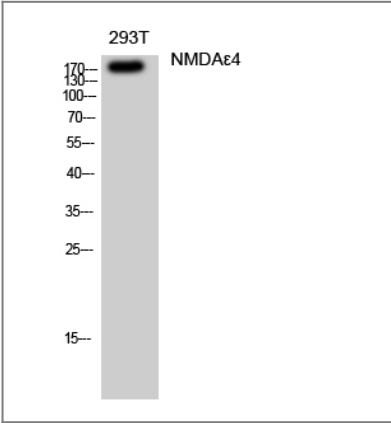
#### Specificity

NMDAε4 Polyclonal Antibody detects endogenous levels of NMDAε4 protein.

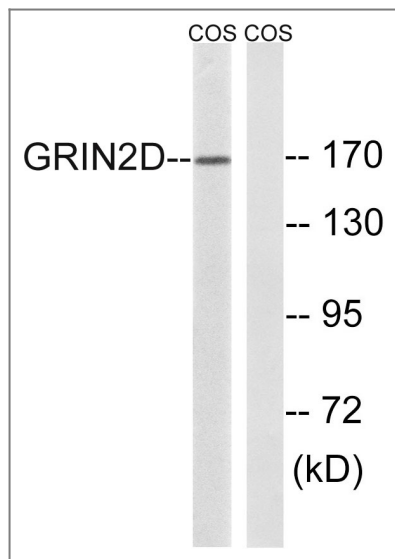
### Target Information

Gene name	GRIN2D		
Protein Name	Glutamate [NMDA] receptor subunit epsilon-4		
	Organism	Gene ID	UniProt ID
	Human	<a href="#">2906</a> ;	<a href="#">O15399</a> ;
	Mouse	<a href="#">14814</a> ;	<a href="#">Q03391</a> ;
	Rat	<a href="#">24412</a> ;	<a href="#">Q62645</a> ;
Cellular Localization	Cell membrane ; Multi-pass membrane protein. Cell junction, synapse, postsynaptic cell membrane; Multi-pass membrane protein.		
Tissue specificity	Brain,Fetal brain,		
Function	Function:NMDA receptor subtype of glutamate-gated ion channels with high calcium permeability and voltage-dependent sensitivity to magnesium. Mediated by glycine.,similarity:Belongs to the glutamate-gated ion channel (TC 1.A.10) family.,subunit:Interacts with PDZ domains of INADL and DLG4 (By similarity). Forms heteromeric channel of a zeta subunit (GRIN1), a epsilon subunit (GRIN2A, GRIN2B, GRIN2C or GRIN2D) and a third subunit (GRIN3A or GRIN3B).,		

| Validation Data



Western Blot analysis of 293T cells using NMDAε4 Polyclonal Antibody diluted at 1:500



Western blot analysis of lysates from COS7 cells, using GRIN2D Antibody. The lane on the right is blocked with the synthesized peptide.

## Contact information

Orders: [order.cn@immunoway.com](mailto:order.cn@immunoway.com)  
Support: [support.cn@immunoway.com](mailto:support.cn@immunoway.com)  
Telephone: 400-8787-807(China)  
Website: <http://www.immunoway.com.cn>  
Address: 2200 Ringwood Ave San Jose, CA 95131 USA



Please scan the QR code to access additional product information:  
**NMDAε4 Rabbit pAb**

For Research Use Only. Not for Use in Diagnostic Procedures.

[Antibody](#) | [ELISA Kits](#) | [Protein](#) | [Reagents](#)