

## NMDAε2 Rabbit pAb

CatalogNo: YT3152

### Key Features

#### Host Species

- Rabbit

#### Reactivity

- Human, Mouse, Rat

#### Applications

- WB, IHC, IF, ELISA

#### MW

- 165kD (Observed)

#### Isotype

- IgG

### Recommended Dilution Ratios

**WB 1:500-1:2000**

**IHC 1:100-1:300**

**ELISA 1:5000**

**IF 1:50-200**

### Storage

#### Storage\*

-15°C to -25°C/1 year (Do not lower than -25°C)

#### Formulation

Liquid in PBS containing 50% glycerol, 0.5% BSA and 0.02% sodium azide.

### Basic Information

#### Clonality

Polyclonal

### Immunogen Information

#### Immunogen

The antiserum was produced against synthesized peptide derived from human NMDAR2B. AA range:1435-1484

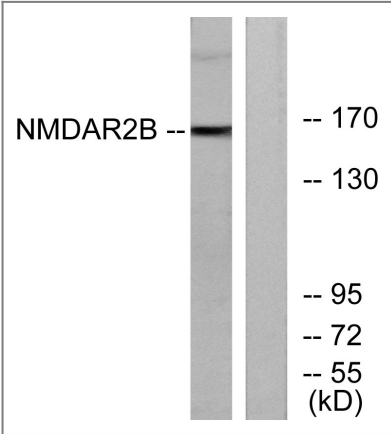
#### Specificity

NMDAε2 Polyclonal Antibody detects endogenous levels of NMDAε2 protein.

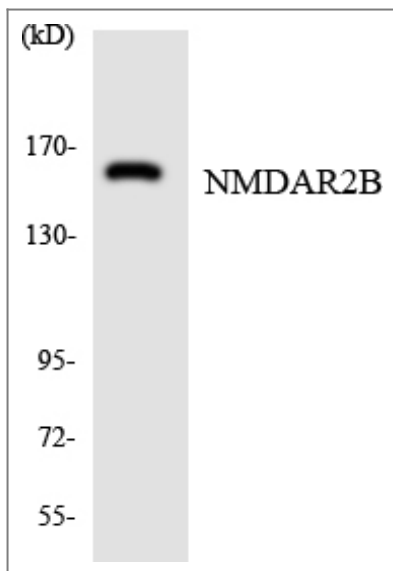
### Target Information

Gene name	GRIN2B		
Protein Name	Glutamate [NMDA] receptor subunit epsilon-2		
	Organism	Gene ID	UniProt ID
	Human	<a href="#">2904</a> ;	<a href="#">Q13224</a> ;
	Mouse	<a href="#">14812</a> ;	<a href="#">Q01097</a> ;
	Rat	<a href="#">24410</a> ;	<a href="#">Q00960</a> ;
Cellular Localization	Cell membrane ; Multi-pass membrane protein . Cell junction, synapse, postsynaptic cell membrane ; Multi-pass membrane protein . Late endosome . Lysosome . Cytoplasm, cytoskeleton . Co-localizes with the motor protein KIF17 along microtubules. .		
Tissue specificity	Primarily found in the fronto-parieto-temporal cortex and hippocampus pyramidal cells, lower expression in the basal ganglia.		
Function	Function:NMDA receptor subtype of glutamate-gated ion channels with high calcium permeability and voltage-dependent sensitivity to magnesium. Mediated by glycine.,similarity:Belongs to the glutamate-gated ion channel (TC 1.A.10) family.,subunit:Forms heteromeric channel of a zeta subunit (GRIN1), a epsilon subunit (GRIN2A, GRIN2B, GRIN2C or GRIN2D) and a third subunit (GRIN3A or GRIN3B). Found in a complex with GRIN1 and GRIN3B. Found in a complex with GRIN1, GRIN3A and PPP2CB. Interacts with PDZ domains of INADL and DLG4. Interacts with HIP1 (By similarity). Interacts with MAGI3.,tissue specificity:Primarily found in the fronto-parieto-temporal cortex and hippocampus pyramidal cells, lower expression in the basal ganglia.,		

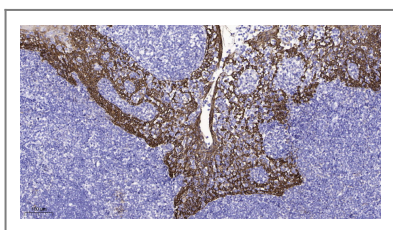
Validation Data



Western blot analysis of lysates from Jurkat cells, using NMDAR2B Antibody. The lane on the right is blocked with the synthesized peptide.



Western blot analysis of the lysates from HUVEC cells using NMDAR2B antibody.



Immunohistochemical analysis of paraffin-embedded human tonsil. 1, Antibody was diluted at 1:200 (4° overnight). 2, Tris-EDTA, pH 9.0 was used for antigen retrieval. 3, Secondary antibody was diluted at 1:200 (room temperature, 45 min).

## Contact information

Orders: [order.cn@immunoway.com](mailto:order.cn@immunoway.com)  
 Support: [support.cn@immunoway.com](mailto:support.cn@immunoway.com)  
 Telephone: 400-8787-807 (China)  
 Website: <http://www.immunoway.com.cn>  
 Address: 2200 Ringwood Ave San Jose, CA 95131 USA



Please scan the QR code to access additional product information:  
**NMDAε2 Rabbit pAb**

For Research Use Only. Not for Use in Diagnostic Procedures.

[Antibody](#) | [ELISA Kits](#) | [Protein](#) | [Reagents](#)