

## NICE4 Rabbit pAb

CatalogNo: YT3125

### Key Features

#### Host Species

- Rabbit

#### Reactivity

- Human, Mouse

#### Applications

- WB, ELISA

#### MW

- 115kD (Observed)

#### Isotype

- IgG

### Storage

**Storage\*** -15°C to -25°C/1 year (Do not lower than -25°C)

**Formulation** Liquid in PBS containing 50% glycerol, 0.5% BSA and 0.02% sodium azide.

### Recommended Dilution Ratios

**WB 1:500-1:2000**

**ELISA 1:20000**

**Not yet tested in other applications.**

### Basic Information

**Clonality** Polyclonal

### Immunogen Information

**Immunogen** The antiserum was produced against synthesized peptide derived from human UBAP2L. AA range:561-610

**Specificity** NICE4 Polyclonal Antibody detects endogenous levels of NICE4 protein.

### Target Information

**Gene name** UBAP2L

**Protein Name** Ubiquitin-associated protein 2-like

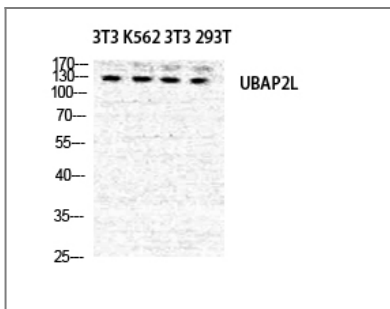
Organism	Gene ID	UniProt ID
Human	<a href="#">9898</a> ;	<a href="#">Q14157</a> ;
Mouse	<a href="#">74383</a> ;	<a href="#">Q80X50</a> ;

**Cellular Localization** Cytoplasm, Stress granule .

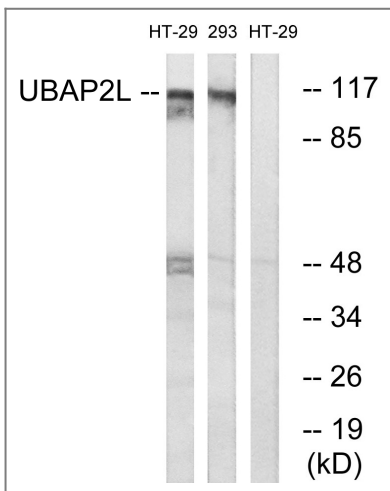
**Tissue specificity** Ubiquitous.

**Function** PTM:Phosphorylated upon DNA damage, probably by ATM or ATR.,similarity:Contains 1 UBA domain.,tissue specificity:Ubiquitous.,

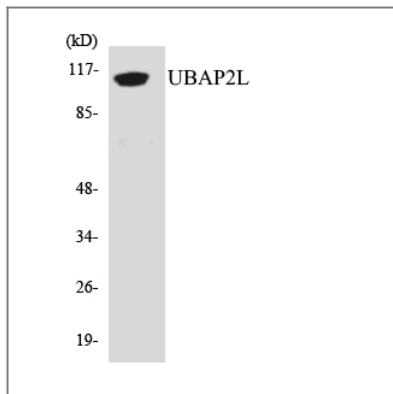
## Validation Data



Western Blot analysis of NIH-3T3 K562 NIH-3T3 293T cells using NICE4 Polyclonal Antibody diluted at 1:500



Western blot analysis of lysates from HT-29 and 293 cells, using UBAP2L Antibody. The lane on the right is blocked with the synthesized peptide.



Western blot analysis of the lysates from Jurkat cells using UBAP2L antibody.

## Contact information

Orders: [order.cn@immunoway.com](mailto:order.cn@immunoway.com)  
Support: [support.cn@immunoway.com](mailto:support.cn@immunoway.com)  
Telephone: 400-8787-807(China)  
Website: <http://www.immunoway.com.cn>  
Address: 2200 Ringwood Ave San Jose, CA 95131 USA



Please scan the QR code to access additional product information:  
**NICE4 Rabbit pAb**

For Research Use Only. Not for Use in Diagnostic Procedures.

[Antibody](#) | [ELISA Kits](#) | [Protein](#) | [Reagents](#)