

## NF-YB Rabbit pAb

CatalogNo: YT3091

### | Key Features

#### Host Species

- Rabbit

#### Reactivity

- Human, Mouse, Rat

#### Applications

- WB, IHC, IF, ELISA

#### MW

- 29kD (Observed)

#### Isotype

- IgG

### | Recommended Dilution Ratios

**WB 1:500-1:2000**

**IHC 1:100-1:300**

**ELISA 1:10000**

**IF 1:50-200**

### | Storage

#### Storage\*

-15°C to -25°C/1 year (Do not lower than -25°C)

#### Formulation

Liquid in PBS containing 50% glycerol, 0.5% BSA and 0.02% sodium azide.

### | Basic Information

#### Clonality

Polyclonal

### | Immunogen Information

#### Immunogen

The antiserum was produced against synthesized peptide derived from human NFYB. AA range: 1-50

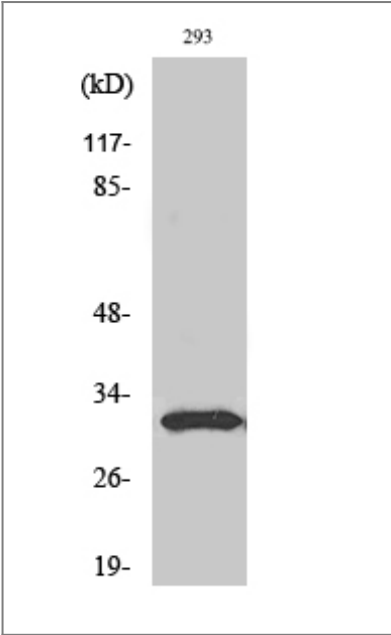
#### Specificity

NF-YB Polyclonal Antibody detects endogenous levels of NF-YB protein.

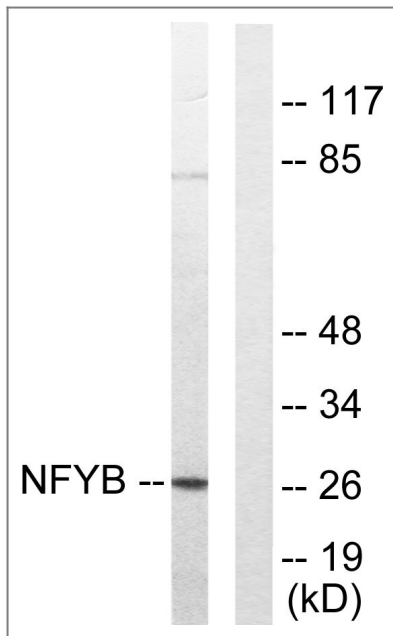
### | Target Information

Gene name	NFYB		
Protein Name	Nuclear transcription factor Y subunit beta		
	Organism	Gene ID	UniProt ID
	Human	<a href="#">4801</a> ;	<a href="#">P25208</a> ;
	Mouse	<a href="#">18045</a> ;	<a href="#">P63139</a> ;
	Rat	<a href="#">25336</a> ;	<a href="#">P63140</a> ;
Cellular Localization	Nucleus.		
Tissue specificity	Urinary bladder,		
Function	<p>Domain:Can be divided into 3 domains: the weakly conserved A domain, the highly conserved B domain thought to be involved in subunit interaction and DNA binding, and the Glu-rich C domain.,Function:Stimulates the transcription of various genes by recognizing and binding to a CCAAT motif in promoters, for example in type 1 collagen, albumin and beta-actin genes.,similarity:Belongs to the NFYB/HAP3 subunit family.,subunit:Heterotrimeric transcription factor composed of three components, NF-YA, NF-YB and NF-YC. NF-YB and NF-YC must interact and dimerize for NF-YA association and DNA binding.,</p>		

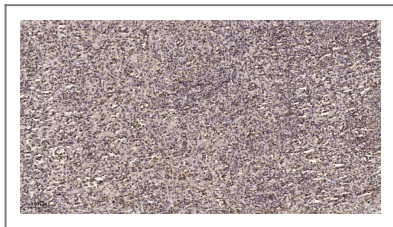
Validation Data



Western Blot analysis of various cells using NF-YB Polyclonal Antibody cells nucleus extracted by Minute TM Cytoplasmic and Nuclear Fractionation kit (SC-003,Inventbiotech,MN,USA).



Western blot analysis of lysates from 293 cells, using NFYB Antibody. The lane on the right is blocked with the synthesized peptide.



Immunohistochemical analysis of paraffin-embedded human spleen. 1, Tris-EDTA, pH 9.0 was used for antigen retrieval. 2 Antibody was diluted at 1:200 (4° overnight). 3, Secondary antibody was diluted at 1:200 (room temperature, 45min).

## | Contact information

Orders: [order.cn@immunoway.com](mailto:order.cn@immunoway.com)  
 Support: [support.cn@immunoway.com](mailto:support.cn@immunoway.com)  
 Telephone: 400-8787-807 (China)  
 Website: <http://www.immunoway.com.cn>  
 Address: 2200 Ringwood Ave San Jose, CA 95131 USA



Please scan the QR code  
 to access additional  
 product information:  
**NF-YB Rabbit pAb**

For Research Use Only. Not for Use in Diagnostic Procedures.

[Antibody](#) | [ELISA Kits](#) | [Protein](#) | [Reagents](#)