

NFRκB Rabbit pAb

CatalogNo: YT3089

| Key Features

Host Species

- Rabbit

Reactivity

- Human, Mouse, Monkey

Applications

- WB, ELISA, IHC

MW

- 110kD (Observed)

Isotype

- IgG

| Recommended Dilution Ratios

WB 1:500-2000

IHC 1:50-300

ELISA 1:2000-20000

| Storage

Storage* -15°C to -25°C/1 year (Do not lower than -25°C)

Formulation Liquid in PBS containing 50% glycerol, 0.5% BSA and 0.02% sodium azide.

| Basic Information

Clonality Polyclonal

| Immunogen Information

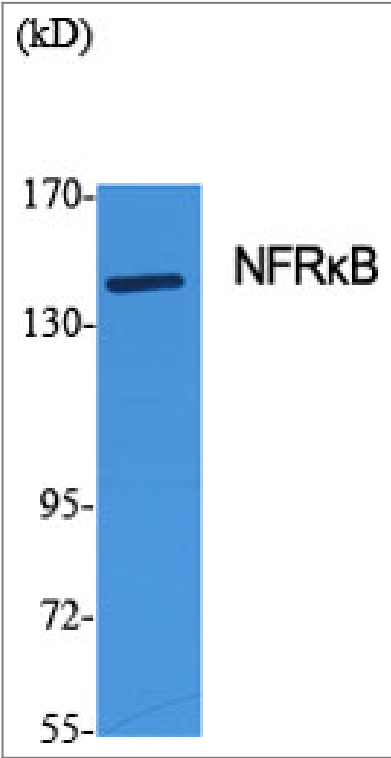
Immunogen The antiserum was produced against synthesized peptide derived from human NFRKB. AA range: 463-512

Specificity NFRκB Polyclonal Antibody detects endogenous levels of NFRκB protein.

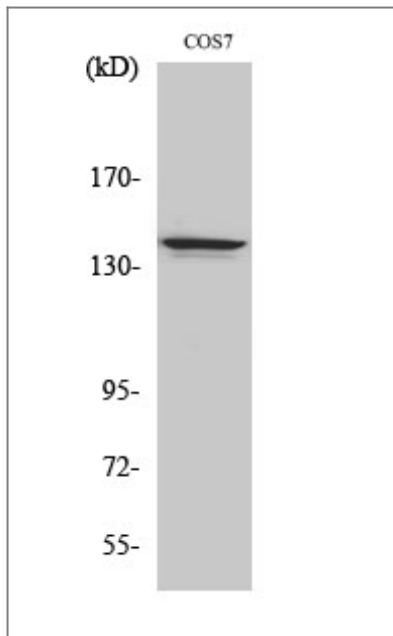
| Target Information

Gene name	NFRKB		
Protein Name	Nuclear factor related to kappa-B-binding protein		
	Organism	Gene ID	UniProt ID
	Human	4798;	Q6P4R8;
	Mouse	235134;	Q6PIJ4;
Cellular Localization	Nucleus .		
Tissue specificity	Expressed in thymus, brain, testes, spleen and liver.		
Function	Function:Binds to the DNA consensus sequence 5'-GGGGAATCTCC-3'.PTM:Phosphorylated upon DNA damage, probably by ATM or ATR.,subunit:Component of the chromatin-remodeling INO80 complex, at least composed of ACTL6A, ACTR5, ACTR8, RVBL1, RVBL2, INO80, INO80B, INO80C, INO80D and INO80E.,tissue specificity:Expressed in thymus, brain, testes, spleen and liver.,		

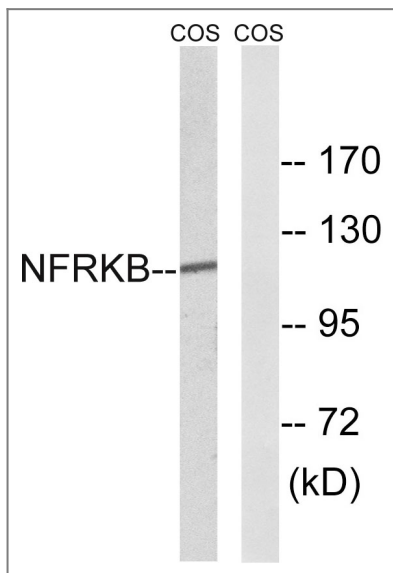
Validation Data



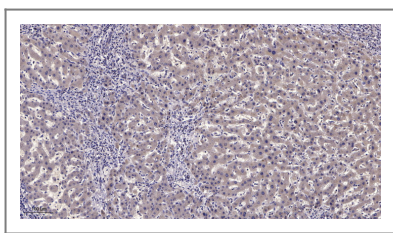
Western Blot analysis of various cells using NFRkB Polyclonal Antibody diluted at 1:500 cells nucleus extracted by Minute TM Cytoplasmic and Nuclear Fractionation kit (SC-003,Inventbiotech,MN,USA).



Western Blot analysis of COS7 cells using NFRκB Polyclonal Antibody diluted at 1:500 cells nucleus extracted by Minute TM Cytoplasmic and Nuclear Fractionation kit (SC-003, Invent biotech, MN, USA).



Western blot analysis of lysates from COS7 cells, using NFRKB Antibody. The lane on the right is blocked with the synthesized peptide.



Immunohistochemical analysis of paraffin-embedded human liver cancer. 1, Antibody was diluted at 1:200 (4° overnight). 2, Tris-EDTA, pH 9.0 was used for antigen retrieval. 3, Secondary antibody was diluted at 1:200 (room temperature, 45 min).

Contact information

Orders: order.cn@immunoway.com
 Support: support.cn@immunoway.com
 Telephone: 400-8787-807 (China)
 Website: <http://www.immunoway.com.cn>
 Address: 2200 Ringwood Ave San Jose, CA 95131 USA



Please scan the QR code to access additional product information:
NFRκB Rabbit pAb

