

## NF-1 Rabbit pAb

CatalogNo: YT3078

### Key Features

**Host Species**

- Rabbit

**Reactivity**

- Human, Mouse, Rat

**Applications**

- WB, IHC, IF, ELISA

**MW**

- 55kD (Observed)

**Isotype**

- IgG

### Recommended Dilution Ratios

**WB 1:500-1:2000****IHC 1:100-1:300****ELISA 1:20000****IF 1:50-200**

### Storage

**Storage\***

-15°C to -25°C/1 year (Do not lower than -25°C)

**Formulation**

Liquid in PBS containing 50% glycerol, 0.5% BSA and 0.02% sodium azide.

### Basic Information

**Clonality**

Polyclonal

### Immunogen Information

**Immunogen**

The antiserum was produced against synthesized peptide derived from human Nuclear Factor 1. AA range: 11-60

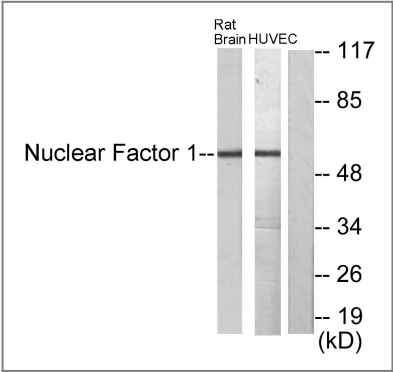
**Specificity**

NF-1 Polyclonal Antibody detects endogenous levels of NF-1 protein.

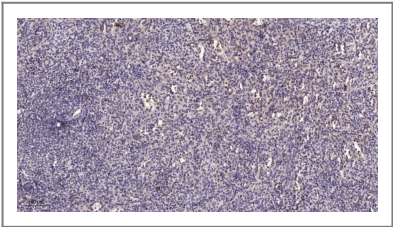
### Target Information

Gene name	NFIA		
Protein Name	Nuclear factor 1 A-type		
	Organism	Gene ID	UniProt ID
	Human	<a href="#">4774</a> ; <a href="#">4781</a> ; <a href="#">4782</a> ; <a href="#">4784</a> ;	<a href="#">Q12857</a> ; <a href="#">O00712</a> ; <a href="#">P08651</a> ; <a href="#">Q14938</a> ;
	Mouse	<a href="#">18027</a> ; <a href="#">18028</a> ; <a href="#">18029</a> ; <a href="#">18032</a> ;	
	Rat	<a href="#">25492</a> ;	<a href="#">P09414</a> ;
Cellular Localization	Nucleus.		
Tissue specificity	Brain,Epithelium,Skeletal muscle,Testis,		
Function	Function:Recognizes and binds the palindromic sequence 5'-TTGGCNNNNNGCCAA-3' present in viral and cellular promoters and in the origin of replication of adenovirus type 2. These proteins are individually capable of activating transcription and replication.,PTM:Phosphorylated upon DNA damage, probably by ATM or ATR.,similarity:Belongs to the CTF/NF-I family.,similarity:Contains 1 CTF/NF-I DNA-binding domain.,subunit:Binds DNA as a homodimer.,		

| Validation Data



Western blot analysis of lysates from rat brain and HUVEC cells, using Nuclear Factor 1 Antibody. The lane on the right is blocked with the synthesized peptide.



Immunohistochemical analysis of paraffin-embedded human spleen. 1, Tris-EDTA,pH9.0 was used for antigen retrieval. 2 Antibody was diluted at 1:200(4° overnight.3,Secondary antibody was diluted at 1:200(room temperature, 45min).

| Contact information

Orders: order.cn@immunoway.com  
Support: support.cn@immunoway.com  
Telephone: 400-8787-807(China)  
Website: <http://www.immunoway.com.cn>  
Address: 2200 Ringwood Ave San Jose, CA 95131 USA



Please scan the QR code  
to access additional  
product information:  
**NF-1 Rabbit pAb**

---

For Research Use Only. Not for Use in Diagnostic Procedures.

[Antibody](#) | [ELISA Kits](#) | [Protein](#) | [Reagents](#)