

Neuropsin Rabbit pAb

CatalogNo: YT3076

Key Features

Host Species

- Rabbit

Reactivity

- Human, Mouse

Applications

- WB, IF, ELISA, IHC

MW

- 43kD (Observed)

Isotype

- IgG

Recommended Dilution Ratios

WB 1:500-2000

IHC 1:50-300

IF 1:200-1:1000

ELISA 1:2000-20000

Storage

Storage*

-15°C to -25°C/1 year (Do not lower than -25°C)

Formulation

Liquid in PBS containing 50% glycerol, 0.5% BSA and 0.02% sodium azide.

Basic Information

Clonality

Polyclonal

Immunogen Information

Immunogen

The antiserum was produced against synthesized peptide derived from human OPN5. AA range: 251-300

Specificity

Neuropsin Polyclonal Antibody detects endogenous levels of Neuropsin protein.

Target Information

Gene name OPN5

Protein Name Opsin-5

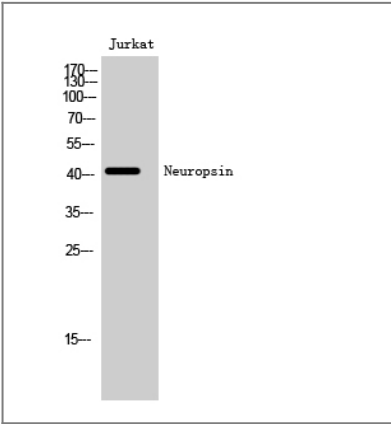
Organism	Gene ID	UniProt ID
Human	221391 ;	Q6U736 ;
Mouse	353344 ;	Q6VZZ7 ;

Cellular Localization Cell membrane ; Multi-pass membrane protein .

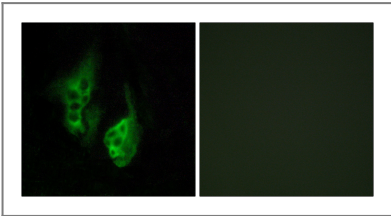
Tissue specificity Detected in brain and retina and cell lines derived from neural retina.

Function Caution:The sequence shown here is derived from an Ensembl automatic analysis pipeline and should be considered as preliminary data.,PTM:It is uncertain whether Cys-315 or Cys-316 is palmitoylated.,similarity:Belongs to the G-protein coupled receptor 1 family. Opsin subfamily.,tissue specificity:Detected in brain and retina and cell lines derived from neural retina.,

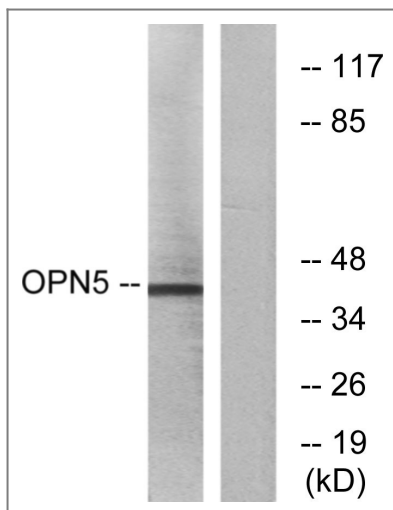
Validation Data



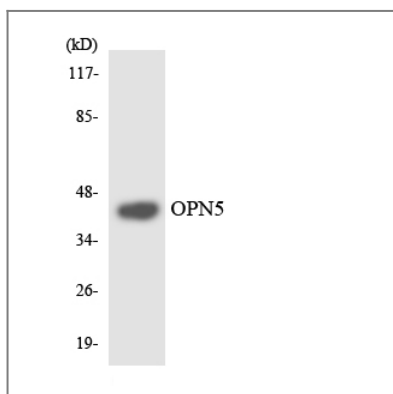
Western Blot analysis of Jurkat cells using Neuropsin Polyclonal Antibody



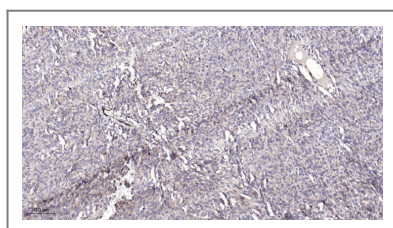
Immunofluorescence analysis of HeLa cells, using OPN5 Antibody. The picture on the right is blocked with the synthesized peptide.



Western blot analysis of lysates from Jurkat cells, using OPN5 Antibody. The lane on the right is blocked with the synthesized peptide.



Western blot analysis of the lysates from HUVEC cells using OPN5 antibody.



Immunohistochemical analysis of paraffin-embedded human Colon cancer. 1, Antibody was diluted at 1:200 (4° overnight). 2, Tris-EDTA, pH 9.0 was used for antigen retrieval. 3, Secondary antibody was diluted at 1:200 (room temperature, 45 min).

Contact information

Orders: order.cn@immunoway.com
 Support: support.cn@immunoway.com
 Telephone: 400-8787-807 (China)
 Website: <http://www.immunoway.com.cn>
 Address: 2200 Ringwood Ave San Jose, CA 95131 USA



Please scan the QR code
 to access additional
 product information:
**Neuropsin Rabbit
 pAb**