

## Neuro D2 Rabbit pAb

CatalogNo: YT3062

### Key Features

#### Host Species

- Rabbit

#### Reactivity

- Human, Mouse, Rat

#### Applications

- WB, IHC, IF, ELISA

#### MW

- 48kD (Observed)

#### Isotype

- IgG

### Recommended Dilution Ratios

WB 1:500-1:2000

IHC 1:100-1:300

ELISA 1:10000

IF 1:50-200

### Storage

#### Storage\*

-15°C to -25°C/1 year (Do not lower than -25°C)

#### Formulation

Liquid in PBS containing 50% glycerol, 0.5% BSA and 0.02% sodium azide.

### Basic Information

#### Clonality

Polyclonal

### Immunogen Information

#### Immunogen

The antiserum was produced against synthesized peptide derived from human NDF2. AA range: 61-110

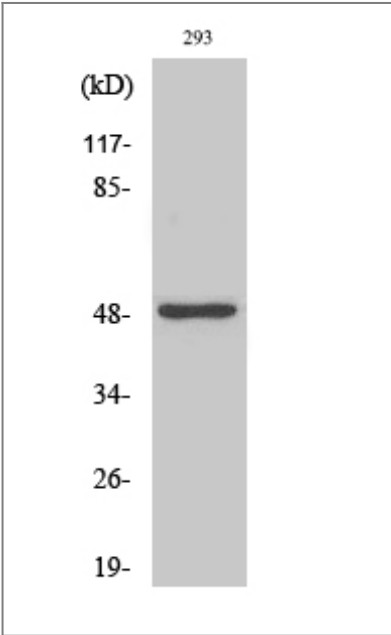
#### Specificity

Neuro D2 Polyclonal Antibody detects endogenous levels of Neuro D2 protein.

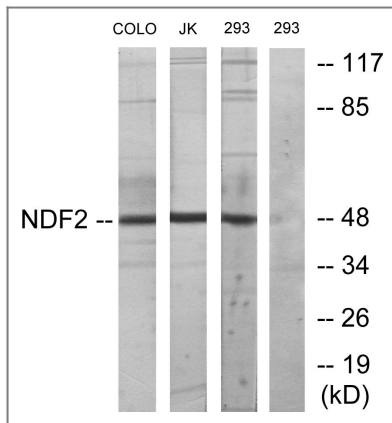
### Target Information

Gene name	NEUROD2		
Protein Name	Neurogenic differentiation factor 2		
	Organism	Gene ID	UniProt ID
	Human	<a href="#">4761</a> ;	<a href="#">Q15784</a> ;
	Mouse	<a href="#">18013</a> ;	<a href="#">Q62414</a> ;
	Rat	<a href="#">54276</a> ;	<a href="#">Q63689</a> ;
Cellular Localization	Nucleus .		
Tissue specificity	Brain,		
Function	Function:Appears to mediate neuronal differentiation.,similarity:Contains 1 basic helix-loop-helix (bHLH) domain.,subunit:Efficient DNA binding requires dimerization with another bHLH protein.,		

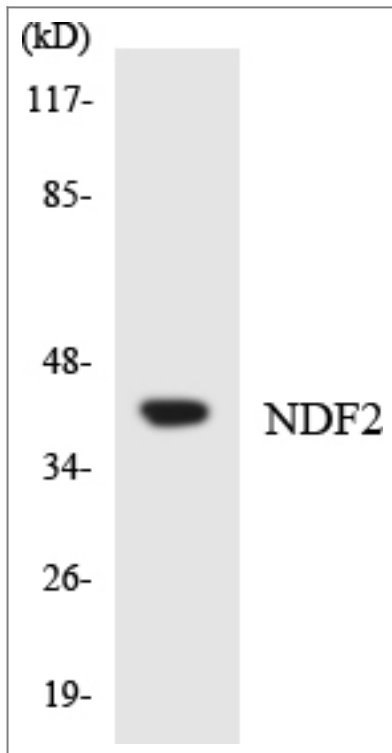
| Validation Data



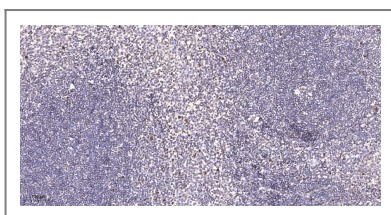
Western Blot analysis of various cells using Neuro D2 Polyclonal Antibody cells nucleus extracted by Minute TM Cytoplasmic and Nuclear Fractionation kit (SC-003,Inventbiotech,MN,USA).



Western blot analysis of lysates from 293, COLO, and Jurkat cells, using NDF2 Antibody. The lane on the right is blocked with the synthesized peptide.



Western blot analysis of the lysates from COLO205 cells using NDF2 antibody.



Immunohistochemical analysis of paraffin-embedded human tonsil. 1, Antibody was diluted at 1:200(4° overnight). 2, Tris-EDTA,pH9.0 was used for antigen retrieval. 3,Secondary antibody was diluted at 1:200(room temperature, 45min).

## Contact information

Orders: order.cn@immunoway.com  
 Support: support.cn@immunoway.com  
 Telephone: 400-8787-807(China)  
 Website: <http://www.immunoway.com.cn>  
 Address: 2200 Ringwood Ave San Jose, CA 95131 USA



Please scan the QR code to access additional product information:  
**Neuro D2 Rabbit pAb**

