

## Neurexin III $\beta$ Rabbit pAb

CatalogNo: YT3057

### Key Features

#### Host Species

- Rabbit

#### Reactivity

- Human,Rat,Mouse,

#### Applications

- WB,ELISA,IHC

#### MW

- 70kD (Observed)

#### Isotype

- IgG

### Recommended Dilution Ratios

WB 1:500-2000

IHC 1:50-300

ELISA 1:2000-20000

### Storage

**Storage\*** -15°C to -25°C/1 year(Do not lower than -25°C)

**Formulation** Liquid in PBS containing 50% glycerol, 0.5% BSA and 0.02% sodium azide.

### Basic Information

**Clonality** Polyclonal

### Immunogen Information

**Immunogen** Synthesized peptide derived from Neurexin III $\beta$  . at AA range: 30-110

**Specificity** Neurexin III $\beta$  Polyclonal Antibody detects endogenous levels of Neurexin III $\beta$  protein.

### Target Information

**Gene name** NRXN3

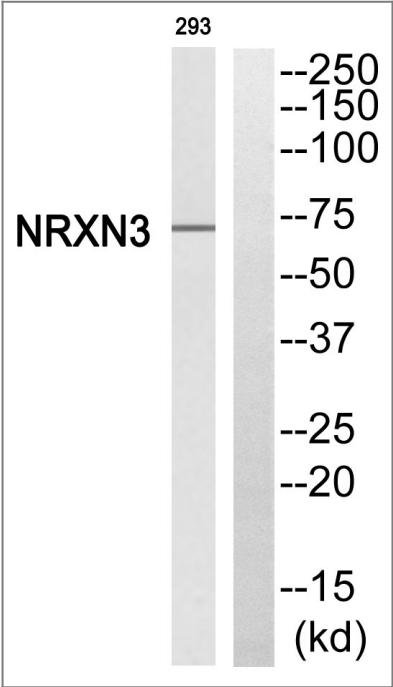
<b>Protein Name</b>	Neurexin-3-beta		
	<b>Organism</b>	<b>Gene ID</b>	<b>UniProt ID</b>
	Human	<a href="#">9369</a> ;	<a href="#">Q9HDB5</a> ;
	Mouse		<a href="#">Q8C985</a> ;

**Cellular Localization** Membrane ; Single-pass type I membrane protein .

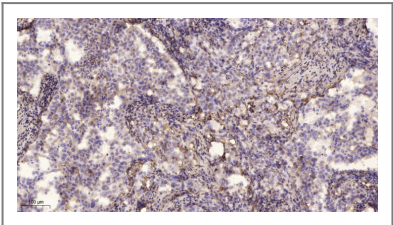
**Tissue specificity** Expressed in the blood vessel walls (at protein level).

**Function** cell morphogenesis, cell morphogenesis involved in differentiation, regulation of neurotransmitter levels, generation of a signal involved in cell-cell signaling, neurotransmitter transport, cell motion, cell adhesion, cell-cell signaling, synaptic transmission, neurotransmitter secretion, axonogenesis, axon guidance, synaptogenesis, transmission of nerve impulse, biological adhesion, cell projection organization, neuron differentiation, neuron projection development,secretion by cell, cellular component morphogenesis, cell part morphogenesis, extracellular structure organization,secretion, neuron development, cell morphogenesis involved in neuron differentiation, neuron projection morphogenesis, cell projection morphogenesis, synapse organization, neurological system process,

## Validation Data



Western blot analysis of NRXN3 Antibody. The lane on the right is blocked with the NRXN3 peptide.



Immunohistochemical analysis of paraffin-embedded human lung cancer. 1, Antibody was diluted at 1:200(4° overnight). 2, Tris-EDTA,pH9.0 was used for antigen retrieval. 3,Secondary antibody was diluted at 1:200(room temperature, 45min).

## | Contact information

Orders: order.cn@immunoway.com  
Support: support.cn@immunoway.com  
Telephone: 400-8787-807(China)  
Website: <http://www.immunoway.com.cn>  
Address: 2200 Ringwood Ave San Jose, CA 95131 USA



Please scan the QR code  
to access additional  
product information:  
**Neurexin III $\beta$  Rabbit  
pAb**

---

For Research Use Only. Not for Use in Diagnostic Procedures.

[Antibody](#) | [ELISA Kits](#) | [Protein](#) | [Reagents](#)