

## Nectin 3 Rabbit pAb

CatalogNo: YT3024

### Key Features

#### Host Species

- Rabbit

#### Reactivity

- Human, Mouse

#### Applications

- WB, ELISA

#### MW

- 61kD (Observed)

#### Isotype

- IgG

### Recommended Dilution Ratios

**WB 1:500-1:2000**

**ELISA 1:5000**

**Not yet tested in other applications.**

### Storage

#### Storage\*

-15°C to -25°C/1 year (Do not lower than -25°C)

#### Formulation

Liquid in PBS containing 50% glycerol, 0.5% BSA and 0.02% sodium azide.

### Basic Information

#### Clonality

Polyclonal

### Immunogen Information

#### Immunogen

The antiserum was produced against synthesized peptide derived from human PVRL3. AA range: 184-233

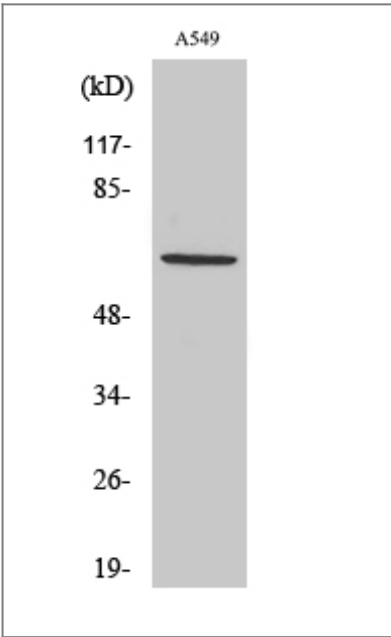
#### Specificity

Nectin 3 Polyclonal Antibody detects endogenous levels of Nectin 3 protein.

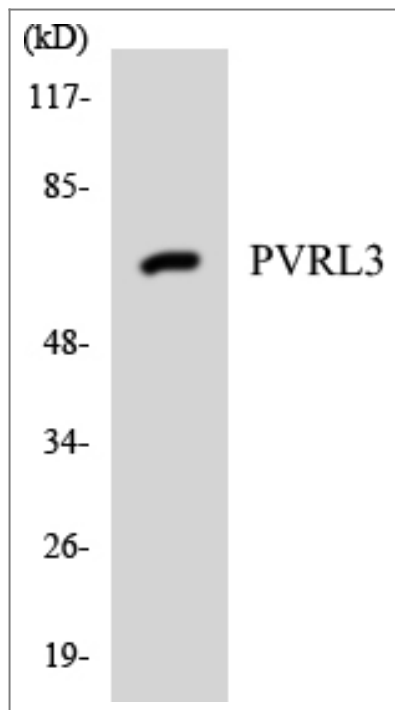
### Target Information

Gene name	PVRL3		
Protein Name	Poliovirus receptor-related protein 3		
	Organism	Gene ID	UniProt ID
	Human	<a href="#">25945</a> ;	<a href="#">Q9NQS3</a> ;
	Mouse	<a href="#">58998</a> ;	<a href="#">Q9JLB9</a> ;
Cellular Localization	Cell membrane ; Single-pass membrane protein . Cell junction, synapse, postsynaptic cell membrane .		
Tissue specificity	Predominantly expressed in testis and placenta as well as in many cell lines, including epithelial cell lines.		
Function	Function:Plays a role in cell-cell adhesion through heterophilic trans-interactions with nectin-like proteins or nectins, such as trans-interaction with PVRL2/nectin-2 at Sertoli-spermatid junctions. Trans-interaction with PVR induces activation of CDC42 and RAC small G proteins through common signaling molecules such as SRC and RAP1. Also involved in the formation of cell-cell junctions, including adherens junctions and synapses. Induces endocytosis-mediated down-regulation of PVR from the cell surface, resulting in reduction of cell movement and proliferation. Plays a role in the morphology of the ciliary body.,similarity:Belongs to the nectin family.,similarity:Contains 1 Ig-like V-type (immunoglobulin-like) domain.,similarity:Contains 2 Ig-like C2-type (immunoglobulin-like) domains.,subunit:Cis- and trans-homodimer. Can form trans-heterodimers with PVRL1/nectin-1, PVRL2/nectin-2, PVR, IGSF4B/Necl-1 and with IGSF4. Interacts with MLLT4/afadin. Binds with low affinity to TIGIT.,tissue specificity:Predominantly expressed in testis and placenta as well as in many cell lines, including epithelial cell lines.,		

| Validation Data



Western Blot analysis of various cells using Nectin 3 Polyclonal Antibody



Western blot analysis of the lysates from HUVEC cells using PVRL3 antibody.

## Contact information

Orders: [order.cn@immunoway.com](mailto:order.cn@immunoway.com)  
Support: [support.cn@immunoway.com](mailto:support.cn@immunoway.com)  
Telephone: 400-8787-807(China)  
Website: <http://www.immunoway.com.cn>  
Address: 2200 Ringwood Ave San Jose, CA 95131 USA



Please scan the QR code  
to access additional  
product information:  
**Nectin 3 Rabbit pAb**

For Research Use Only. Not for Use in Diagnostic Procedures.

[Antibody](#) | [ELISA Kits](#) | [Protein](#) | [Reagents](#)