

Ndfip1 Rabbit pAb

CatalogNo: YT3002

Key Features

Host Species

- Rabbit

Reactivity

- Human, Mouse, Rat

Applications

- WB, ELISA

MW

- 25kD (Observed)

Isotype

- IgG

Recommended Dilution Ratios

WB 1:500-1:2000

ELISA 1:40000

Not yet tested in other applications.

Storage

Storage*

-15°C to -25°C/1 year (Do not lower than -25°C)

Formulation

Liquid in PBS containing 50% glycerol, 0.5% BSA and 0.02% sodium azide.

Basic Information

Clonality

Polyclonal

Immunogen Information

Immunogen

Synthesized peptide derived from Ndfip1 . at AA range: 150-230

Specificity

Ndfip1 Polyclonal Antibody detects endogenous levels of Ndfip1 protein.

Target Information

Gene name

NDFIP1

Protein Name NEDD4 family-interacting protein 1

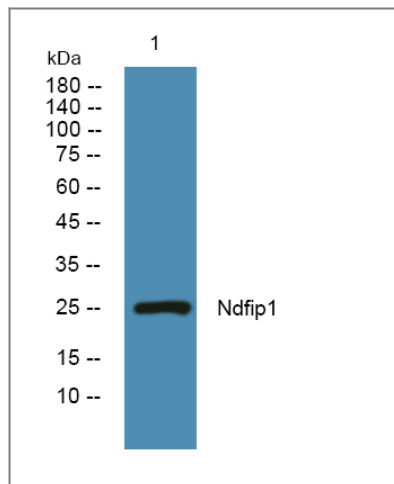
Organism	Gene ID	UniProt ID
Human	80762 ;	Q9BT67 ;
Mouse	65113 ;	Q8R0W6 ;
Rat	291609 ;	Q5U2S1 ;

Cellular Localization Endosome membrane ; Multi-pass membrane protein . Golgi apparatus membrane . Cell junction, synapse, synaptosome . Cell projection, dendrite . Secreted . Detected in exosomes and secreted via the exosomal pathway (PubMed:18819914).

Tissue specificity Widely expressed. Higher levels are detected in cerebellum, pituitary, thalamus, kidney, liver, testis, salivary glands and placenta. Also expressed in fetal brain, kidney and lung.

Function developmental stage:Expressed in fetal brain, kidney and lung.,Domain:The WW-binding motifs mediate interaction with NEDD4.,Function:May play a role in Golgi structure maintenance.,PTM:Ubiquitinated by NEDD4; mono-, di- and polyubiquitinated forms are detected. Ubiquitination regulates its degradation.,subunit:Interacts with NEDD4. Interacts in vitro with NEDD4L, SR140, WWP2 and ITCH.,tissue specificity:Widely expressed. Higher levels are detected in cerebellum, pituitary, thalamus, kidney, liver, testis, salivary glands and placenta.,

Validation Data



Western blot analysis of lysates from Jurkat cells, primary antibody was diluted at 1:1000, 4° over night

Contact information

Orders: order.cn@immunoway.com
Support: support.cn@immunoway.com
Telephone: 400-8787-807(China)
Website: <http://www.immunoway.com.cn>
Address: 2200 Ringwood Ave San Jose, CA 95131 USA



Please scan the QR code to access additional product information:
Ndfip1 Rabbit pAb

