

## NAB2 Rabbit pAb

CatalogNo: YT2975

### Key Features

#### Host Species

- Rabbit

#### Reactivity

- Human, Mouse

#### Applications

- WB, IHC, IF, ELISA

#### MW

- 56kD (Observed)

#### Isotype

- IgG

### Storage

**Storage\*** -15°C to -25°C/1 year (Do not lower than -25°C)

**Formulation** Liquid in PBS containing 50% glycerol, 0.5% BSA and 0.02% sodium azide.

### Recommended Dilution Ratios

**WB 1:500-1:2000**

**IHC 1:100-1:300**

**ELISA 1:10000**

**IF 1:50-200**

### Basic Information

**Clonality** Polyclonal

### Immunogen Information

**Immunogen** The antiserum was produced against synthesized peptide derived from human NAB2. AA range: 261-310

**Specificity** NAB2 Polyclonal Antibody detects endogenous levels of NAB2 protein.

### Target Information

**Gene name** NAB2

**Protein Name** NGFI-A-binding protein 2

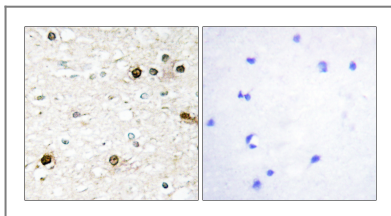
Organism	Gene ID	UniProt ID
Human	<a href="#">4665;</a>	<a href="#">Q15742;</a>
Mouse	<a href="#">17937;</a>	<a href="#">Q61127;</a>

**Cellular Localization** Nucleus . Isoform 2 is not localized to the nucleus. .

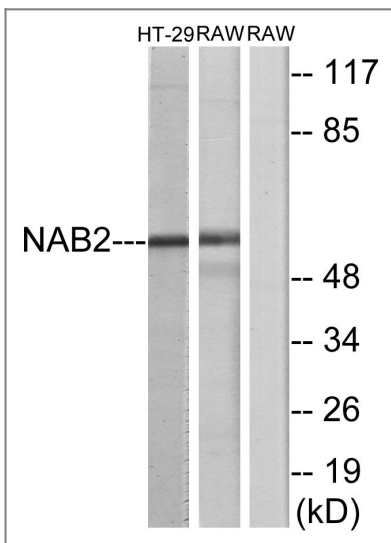
**Tissue specificity** Widely expressed at low levels. Highly expressed in melanoma cell lines.

**Function** Domain:The NAB conserved domain 1 (NCD1) interacts with EGR1 inhibitory domain and mediates multimerization.,Domain:The NAB conserved domain 2 (NCD2) is necessary for transcriptional repression.,Function:Acts as a transcriptional repressor for zinc finger transcription factors EGR1 and EGR2. Isoform 2 lacks repression ability.,induction:By serum and PMA stimulation.,similarity:Belongs to the NAB family.,subcellular location:Isoform 2 is not localized to the nucleus.,subunit:Homomultimers may associate with EGR1 bound to DNA.,tissue specificity:Widely expressed at low levels. Highly expressed in melanoma cell lines.,

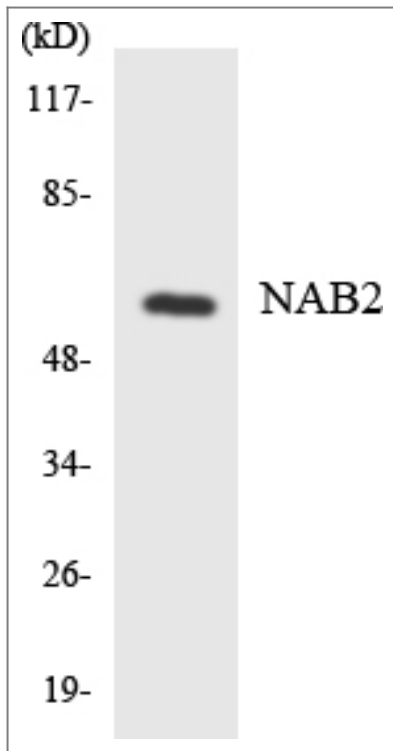
## Validation Data



Immunohistochemistry analysis of paraffin-embedded human brain tissue, using NAB2 Antibody. The picture on the right is blocked with the synthesized peptide.



Western blot analysis of lysates from HT-29 and RAW264.7 cells, using NAB2 Antibody. The lane on the right is blocked with the synthesized peptide.



Western blot analysis of the lysates from HeLa cells using NAB2 antibody.

## Contact information

Orders: [order.cn@immunoway.com](mailto:order.cn@immunoway.com)  
Support: [support.cn@immunoway.com](mailto:support.cn@immunoway.com)  
Telephone: 400-8787-807(China)  
Website: <http://www.immunoway.com.cn>  
Address: 2200 Ringwood Ave San Jose, CA 95131 USA



Please scan the QR code to access additional product information:  
**NAB2 Rabbit pAb**

For Research Use Only. Not for Use in Diagnostic Procedures.

[Antibody](#) | [ELISA Kits](#) | [Protein](#) | [Reagents](#)