

## MxB Rabbit pAb

CatalogNo: YT2925

### Key Features

#### Host Species

- Rabbit

#### Reactivity

- Human, Mouse, Rat

#### Applications

- WB, IHC

#### MW

- 82kD (Observed)

#### Isotype

- IgG

### Storage

**Storage\*** -15°C to -25°C/1 year (Do not lower than -25°C)

**Formulation** Liquid in PBS containing 50% glycerol, 0.5% BSA and 0.02% sodium azide.

### Recommended Dilution Ratios

**WB 1:500-2000**

**IHC 1:50-300**

### Basic Information

**Clonality** Polyclonal

### Immunogen Information

**Immunogen** Synthesized peptide derived from the Internal region of human MxB.. AA range:463-533

**Specificity** MxB Polyclonal Antibody detects endogenous levels of MxB protein.

### Target Information

**Gene name** MX2

**Protein Name** Interferon-induced GTP-binding protein Mx2

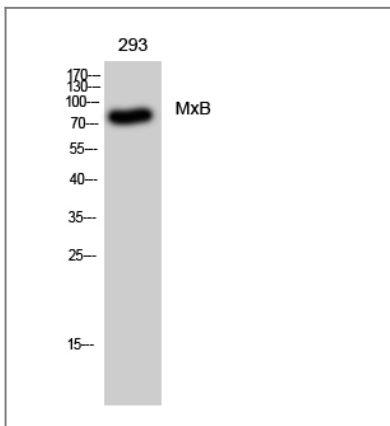
Organism	Gene ID	UniProt ID
Human	<a href="#">4600;</a>	<a href="#">P20592;</a>
Mouse		<a href="#">Q9WVP9;</a>

**Cellular Localization** Cytoplasm . Nucleus . Nucleus, nuclear pore complex . Localization to nuclear pores requires GTP-binding.

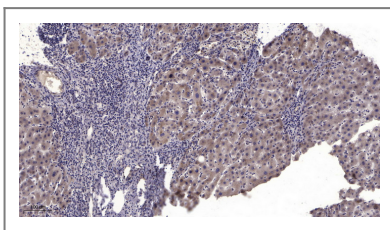
**Tissue specificity** Brain,

**Function** induction:By interferons.,similarity:Belongs to the dynamin family.,similarity:Contains 1 GED domain.,

## Validation Data



Western Blot analysis of 293 cells using MxB Polyclonal Antibody



Immunohistochemical analysis of paraffin-embedded human liver cancer. 1, Antibody was diluted at 1:200(4° overnight). 2, Tris-EDTA,pH9.0 was used for antigen retrieval. 3,Secondary antibody was diluted at 1:200(room temperature, 45min).

## Contact information

Orders: [order.cn@immunoway.com](mailto:order.cn@immunoway.com)  
Support: [support.cn@immunoway.com](mailto:support.cn@immunoway.com)  
Telephone: 400-8787-807(China)  
Website: <http://www.immunoway.com.cn>  
Address: 2200 Ringwood Ave San Jose, CA 95131 USA



Please scan the QR code to access additional product information:  
**MxB Rabbit pAb**

