

MMP-16 Rabbit pAb

CatalogNo: YT2912

Key Features

Host Species

- Rabbit

Reactivity

- Human, Mouse, Rat

Applications

- WB, IHC, IF, ELISA

MW

- 70kD (Observed)

Isotype

- IgG

Recommended Dilution Ratios

WB 1:500-1:2000

IHC 1:100-1:300

ELISA 1:10000

IF 1:50-200

Storage

Storage*

-15°C to -25°C/1 year (Do not lower than -25°C)

Formulation

Liquid in PBS containing 50% glycerol, 0.5% BSA and 0.02% sodium azide.

Basic Information

Clonality

Polyclonal

Immunogen Information

Immunogen

The antiserum was produced against synthesized peptide derived from human MMP-16. AA range: 551-600

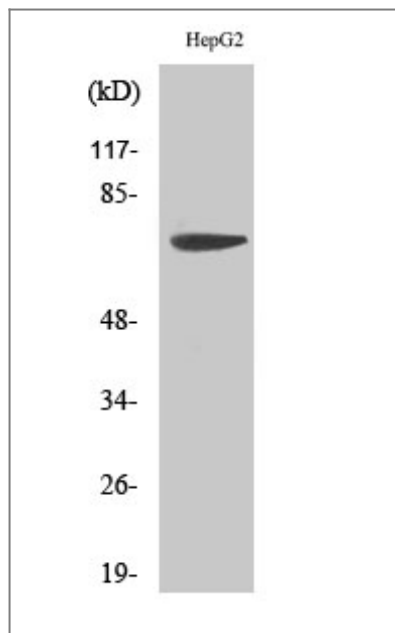
Specificity

MMP-16 Polyclonal Antibody detects endogenous levels of MMP-16 protein.

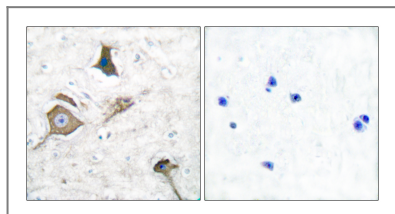
Target Information

Gene name	MMP16												
Protein Name	Matrix metalloproteinase-16												
	<table><tr><th>Organism</th><th>Gene ID</th><th>UniProt ID</th></tr><tr><td>Human</td><td>4325;</td><td>P51512;</td></tr><tr><td>Mouse</td><td>17389;</td><td>Q9WTR0;</td></tr><tr><td>Rat</td><td>65205;</td><td>O35548;</td></tr></table>	Organism	Gene ID	UniProt ID	Human	4325 ;	P51512 ;	Mouse	17389 ;	Q9WTR0 ;	Rat	65205 ;	O35548 ;
Organism	Gene ID	UniProt ID											
Human	4325 ;	P51512 ;											
Mouse	17389 ;	Q9WTR0 ;											
Rat	65205 ;	O35548 ;											
Cellular Localization	[Isoform Long]: Cell membrane ; Single-pass type I membrane protein ; Extracellular side . Localized at the cell surface of melanoma cells.; [Isoform Short]: Secreted, extracellular space, extracellular matrix. Cell surface. Localized at the cell surface of melanoma cells.												
Tissue specificity	Expressed in heart, brain, placenta, ovary and small intestine. Isoform Short is found in the ovary.												
Function	cofactor:Binds 1 zinc ion per subunit.,cofactor:Calcium.,developmental stage:Expressed in tissues undergoing reconstruction. Present in fetal tissues, especially in brain. Expression seems to decline with advanced development.,Domain:The conserved cysteine present in the cysteine-switch motif binds the catalytic zinc ion, thus inhibiting the enzyme. The dissociation of the cysteine from the zinc ion upon the activation-peptide release activates the enzyme.,enzyme regulation:TIMP-2 shows little inhibitory activity compared to TIMP-1. TIMP-1 seems to have less binding affinity than TIMP-2 for the short isoform.,Function:Endopeptidase that degrades various components of the extracellular matrix, such as collagen type III and fibronectin. Activates progelatinase A. Involved in the matrix remodeling of blood vessels. The short isoform cleaves fibronectin and also collagen type III, but at lower rate. It has no effect on type I, II, IV and V collagen. However, upon interaction with CSPG4, it may be involved in degradation and invasion of type I collagen by melanoma cells.,PTM:The precursor is cleaved by a furin endopeptidase.,similarity:Belongs to the peptidase M10A family.,similarity:Contains 4 hemopexin-like domains.,subcellular location:Localized at the cell surface of melanoma cells.,subunit:Interacts with CSPG4 through CSPG4 chondroitin sulfate glycosaminoglycan.,tissue specificity:Expressed in heart, brain, placenta, ovary and small intestine. The short isoform is found in the ovary.,												

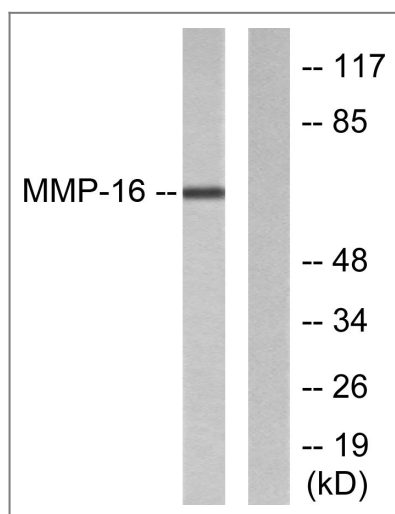
| Validation Data



Western Blot analysis of various cells using MMP-16 Polyclonal Antibody diluted at 1:500



Immunohistochemistry analysis of paraffin-embedded human brain tissue, using MMP-16 Antibody. The picture on the right is blocked with the synthesized peptide.



Western blot analysis of lysates from HepG2 cells, using MMP-16 Antibody. The lane on the right is blocked with the synthesized peptide.

Contact information

Orders: order.cn@immunoway.com
 Support: support.cn@immunoway.com
 Telephone: 400-8787-807(China)
 Website: <http://www.immunoway.com.cn>
 Address: 2200 Ringwood Ave San Jose, CA 95131 USA



Please scan the QR code to access additional product information:
MMP-16 Rabbit pAb

