

MMP-14 Rabbit pAb

CatalogNo: YT2910

Orthogonal Validated 

Key Features

Host Species

- Rabbit

Reactivity

- Human, Mouse, Rat

Applications

- WB, IHC, IF, ELISA

MW

- 65kD (Observed)

Isotype

- IgG

Recommended Dilution Ratios

WB 1:500-1:2000

IHC 1:100-1:300

ELISA 1:10000

IF 1:50-200

Storage

Storage*

-15°C to -25°C/1 year(Do not lower than -25°C)

Formulation

Liquid in PBS containing 50% glycerol, 0.5% BSA and 0.02% sodium azide.

Basic Information

Clonality

Polyclonal

Immunogen Information

Immunogen

The antiserum was produced against synthesized peptide derived from human MMP-14. AA range:471-520

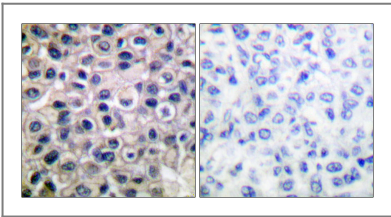
Specificity

MMP-14 Polyclonal Antibody detects endogenous levels of MMP-14 protein.

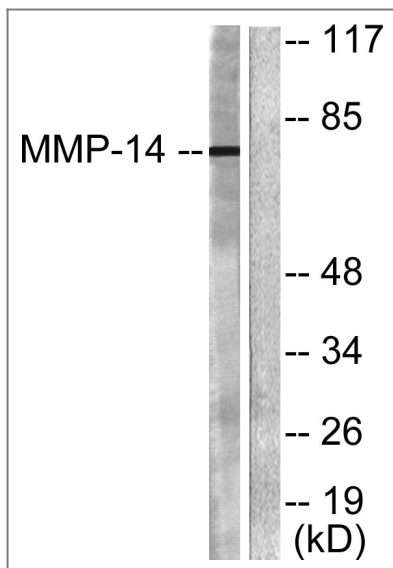
Target Information

Gene name	MMP14		
Protein Name	Matrix metalloproteinase-14		
	Organism	Gene ID	UniProt ID
	Human	4323 ;	P50281 ;
	Mouse	17387 ;	P53690 ;
	Rat	81707 ;	Q10739 ;
Cellular Localization	Membrane ; Single-pass type I membrane protein . Melanosome. Cytoplasm. Identified by mass spectrometry in melanosome fractions from stage I to stage IV. Forms a complex with BST2 and localizes to the cytoplasm.		
Tissue specificity	Expressed in stromal cells of colon, breast, and head and neck. Expressed in lung tumors.		
Function	Catalytic activity:Endopeptidase activity. Activates progelatinase A by cleavage of the propeptide at 37-Asn- -Leu-38. Other bonds hydrolyzed include 35-Gly- -Ile-36 in the propeptide of collagenase 3, and 341-Asn- -Phe-342, 441-Asp- -Leu-442 and 354-Gln- -Thr-355 in the aggrecan interglobular domain.,cofactor:Binds 1 zinc ion per subunit.,cofactor:Calcium.,Domain:The conserved cysteine present in the cysteine-switch motif binds the catalytic zinc ion, thus inhibiting the enzyme. The dissociation of the cysteine from the zinc ion upon the activation-peptide release activates the enzyme.,Function:Seems to specifically activate progelatinase A. May thus trigger invasion by tumor cells by activating progelatinase A on the tumor cell surface.,PTM:The precursor is cleaved by a furin endopeptidase.,similarity:Belongs to the peptidase M10A family.,similarity:Contains 4 hemopexin-like domains.,subcellular location:Identified by mass spectrometry in melanosome fractions from stage I to stage IV.,tissue specificity:In stromal cells of colon, breast, and head and neck.,		

| Validation Data



Immunohistochemistry analysis of paraffin-embedded human breast carcinoma tissue, using MMP-14 Antibody. The picture on the right is blocked with the synthesized peptide.



Western blot analysis of lysates from NIH/3T3 cells, using MMP-14 Antibody. The lane on the right is blocked with the synthesized peptide.

Contact information

Orders: order.cn@immunoway.com
 Support: support.cn@immunoway.com
 Telephone: 400-8787-807(China)
 Website: <http://www.immunoway.com.cn>
 Address: 2200 Ringwood Ave San Jose, CA 95131 USA



Please scan the QR code to access additional product information:
MMP-14 Rabbit pAb

For Research Use Only. Not for Use in Diagnostic Procedures.

[Antibody](#) | [ELISA Kits](#) | [Protein](#) | [Reagents](#)