

Msx-2 Rabbit pAb

CatalogNo: YT2905

Key Features

Host Species

- Rabbit

Reactivity

- Human, Mouse

Applications

- WB, IHC, IF, ELISA

MW

- 28kD (Observed)

Isotype

- IgG

Recommended Dilution Ratios

WB 1:500-1:2000

IHC 1:100-1:300

ELISA 1:20000

IF 1:50-200

Storage

Storage*

-15°C to -25°C/1 year (Do not lower than -25°C)

Formulation

Liquid in PBS containing 50% glycerol, 0.5% BSA and 0.02% sodium azide.

Basic Information

Clonality

Polyclonal

Immunogen Information

Immunogen

Synthesized peptide derived from the Internal region of human Msx-2.

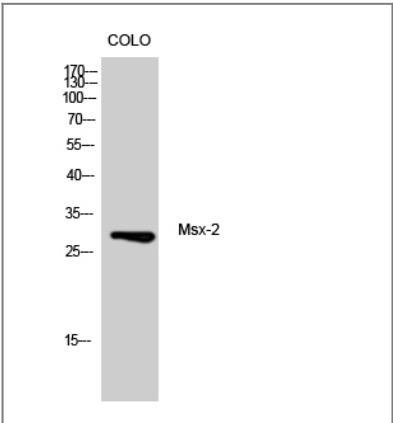
Specificity

Msx-2 Polyclonal Antibody detects endogenous levels of Msx-2 protein.

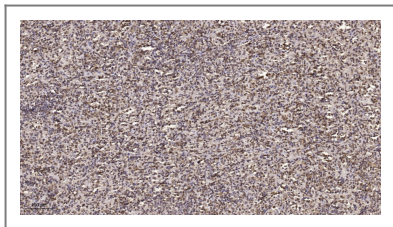
Target Information

Gene name	MSX2		
Protein Name	Homeobox protein MSX-2		
	Organism	Gene ID	UniProt ID
	Human	4488;	P35548;
	Mouse	17702;	Q03358;
Cellular Localization	Nucleus.		
Tissue specificity	Osteoblast,Pancreas,Tooth,		
Function	<p>Disease:Defects in MSX2 are the cause of craniosynostosis type 2 (CRS2) [MIM:604757]; also known as craniosynostosis Boston-type (CSB). CRS2 is an autosomal dominant disorder characterized by the premature fusion of calvarial sutures. The craniosynostosis phenotype is either fronto-orbital recession, or frontal bossing, or turribrachycephaly, or cloverleaf skull. Associated features include severe headache, high incidence of visual problems (myopia or hyperopia), and short first metatarsals. Intelligence is normal.,Disease:Defects in MSX2 are the cause of parietal foramina 1 (PFM1) [MIM:168500]; also known as foramina parietalia permagna (FPP). PFM1 is an autosomal dominant disease characterized by oval defects of the parietal bones caused by deficient ossification around the parietal notch, which is normally obliterated during the fifth fetal month.,Disease:Defects in MSX2 are the cause of parietal foramina with cleidocranial dysplasia (PFMCCD) [MIM:168550]; also known as cleidocranial dysplasia with parietal foramina. PFMCCD combines skull defects in the form of enlarged parietal foramina and deficient ossification of the clavicles.,Function:Probable morphogenetic role. May play a role in limb-pattern formation. In osteoblasts, suppresses transcription driven by the osteocalcin FGF response element (OCFRE).,similarity:Belongs to the Msh homeobox family.,similarity:Contains 1 homeobox DNA-binding domain.,subunit:Interacts with MINT (By similarity). Interacts with G22P1 (Ku70) and XRCC5 (Ku80).,</p>		

Validation Data



Western Blot analysis of CoLo cells using Msx-2 Polyclonal Antibody



Immunohistochemical analysis of paraffin-embedded human spleen. 1, Tris-EDTA, pH 9.0 was used for antigen retrieval. 2 Antibody was diluted at 1:200 (4° overnight). 3, Secondary antibody was diluted at 1:200 (room temperature, 45 min).

| Contact information

Orders: order.cn@immunoway.com
Support: support.cn@immunoway.com
Telephone: 400-8787-807 (China)
Website: <http://www.immunoway.com.cn>
Address: 2200 Ringwood Ave San Jose, CA 95131 USA



Please scan the QR code to access additional product information:
Msx-2 Rabbit pAb

For Research Use Only. Not for Use in Diagnostic Procedures.

[Antibody](#) | [ELISA Kits](#) | [Protein](#) | [Reagents](#)