

MRP-S7 Rabbit pAb

CatalogNo: YT2892

Key Features

Host Species

- Rabbit

Reactivity

- Human, Mouse, Rat

Applications

- WB, IHC, IF, ELISA

MW

- 24kD (Observed)

Isotype

- IgG

Recommended Dilution Ratios

WB 1:500-1:2000

IHC 1:100-1:300

ELISA 1:40000

IF 1:50-200

Storage

Storage*

-15°C to -25°C/1 year (Do not lower than -25°C)

Formulation

Liquid in PBS containing 50% glycerol, 0.5% BSA and 0.02% sodium azide.

Basic Information

Clonality

Polyclonal

Immunogen Information

Immunogen

The antiserum was produced against synthesized peptide derived from human MRPS7. AA range: 91-140

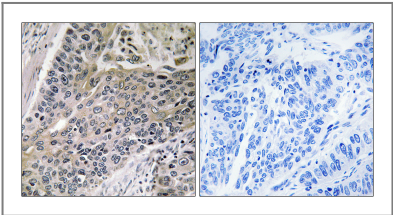
Specificity

MRP-S7 Polyclonal Antibody detects endogenous levels of MRP-S7 protein.

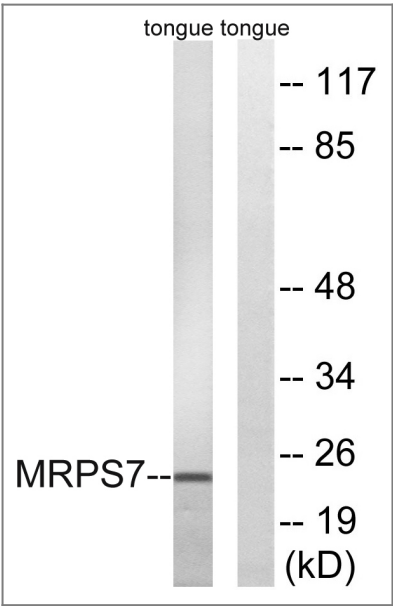
Target Information

Gene name	MRPS7		
Protein Name	28S ribosomal protein S7 mitochondrial		
	Organism	Gene ID	UniProt ID
	Human	51081 ;	Q9Y2R9 ;
	Mouse	50529 ;	Q80X85 ;
	Rat	113958 ;	Q5I0K8 ;
Cellular Localization	Mitochondrion .		
Tissue specificity	Eye,Skeletal muscle,Small intestine,Umbilical cord blood,		
Function	similarity:Belongs to the ribosomal protein S7P family.,subunit:Component of the mitochondrial ribosome small subunit (28S) which comprises a 12S rRNA and about 30 distinct proteins.,		

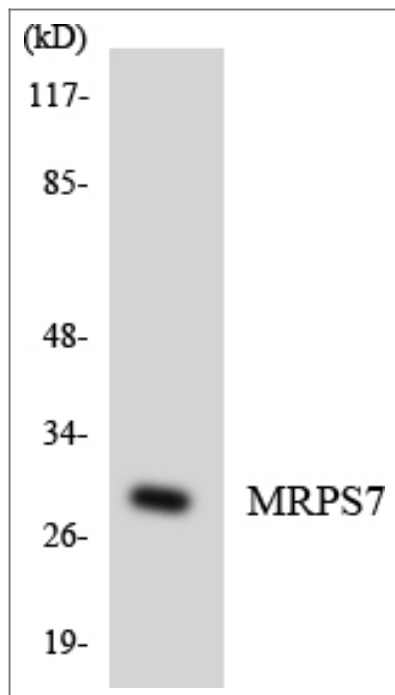
Validation Data



Immunohistochemistry analysis of paraffin-embedded human lung carcinoma tissue, using MRPS7 Antibody. The picture on the right is blocked with the synthesized peptide.



Western blot analysis of lysates from rat tongue cells, using MRPS7 Antibody. The lane on the right is blocked with the synthesized peptide.



Western blot analysis of the lysates from HeLa cells using MRPS7 antibody.

Contact information

Orders: order.cn@immunoway.com
Support: support.cn@immunoway.com
Telephone: 400-8787-807(China)
Website: <http://www.immunoway.com.cn>
Address: 2200 Ringwood Ave San Jose, CA 95131 USA



Please scan the QR code
to access additional
product information:
MRP-S7 Rabbit pAb

For Research Use Only. Not for Use in Diagnostic Procedures.

[Antibody](#) | [ELISA Kits](#) | [Protein](#) | [Reagents](#)