

## MRP-S2 Rabbit pAb

CatalogNo: YT2879

### Key Features

#### Host Species

- Rabbit

#### Reactivity

- Human, Mouse

#### Applications

- WB, IHC, IF, ELISA

#### MW

- 33kD (Observed)

#### Isotype

- IgG

### Recommended Dilution Ratios

WB 1:500-1:2000

IHC 1:100-1:300

ELISA 1:5000

IF 1:50-200

### Storage

#### Storage\*

-15°C to -25°C/1 year (Do not lower than -25°C)

#### Formulation

Liquid in PBS containing 50% glycerol, 0.5% BSA and 0.02% sodium azide.

### Basic Information

#### Clonality

Polyclonal

### Immunogen Information

#### Immunogen

The antiserum was produced against synthesized peptide derived from human MRPS2. AA range: 236-285

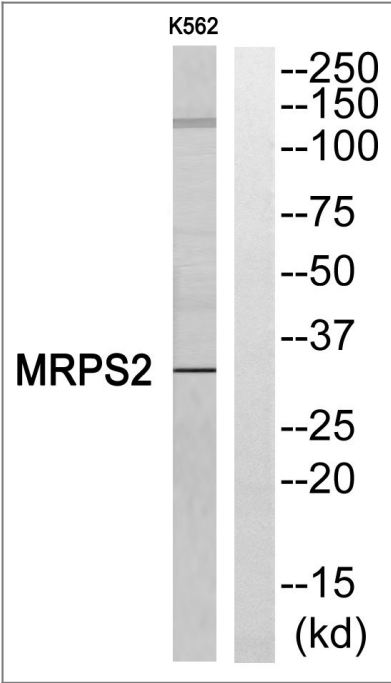
#### Specificity

MRP-S2 Polyclonal Antibody detects endogenous levels of MRP-S2 protein.

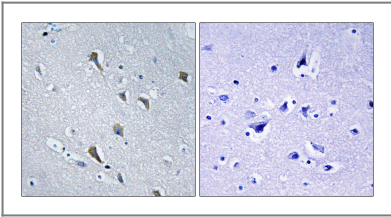
### Target Information

Gene name	MRPS2		
Protein Name	28S ribosomal protein S2 mitochondrial		
	Organism	Gene ID	UniProt ID
	Human	<a href="#">51116</a> ;	<a href="#">Q9Y399</a> ;
	Mouse		<a href="#">Q924T2</a> ;
Cellular Localization	Mitochondrion .		
Tissue specificity	Brain,Lung,Skin,		
Function	sequence Caution:Wrong choice of frame.,similarity:Belongs to the ribosomal protein S2P family.,subunit:Component of the mitochondrial ribosome small subunit (28S) which comprises a 12S rRNA and about 30 distinct proteins.,		

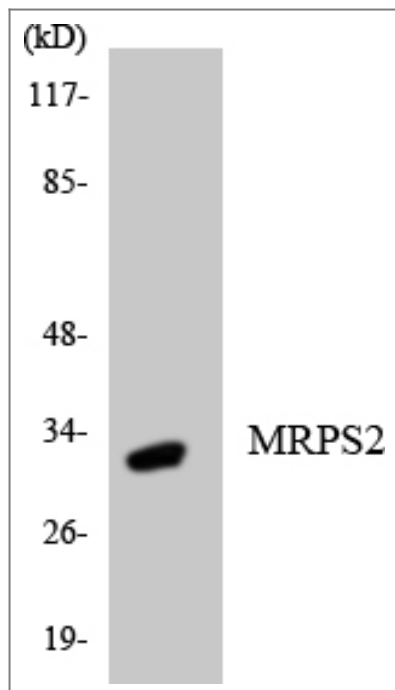
| Validation Data



Western blot analysis of MRPS2 Antibody. The lane on the right is blocked with the MRPS2 peptide.



Immunohistochemistryt analysis of paraffin-embedded human brain, using MRPS2 Antibody. The lane on the right is blocked with the MRPS2 peptide.



Western blot analysis of the lysates from HepG2 cells using MRPS2 antibody.

## Contact information

Orders: [order.cn@immunoway.com](mailto:order.cn@immunoway.com)  
 Support: [support.cn@immunoway.com](mailto:support.cn@immunoway.com)  
 Telephone: 400-8787-807(China)  
 Website: <http://www.immunoway.com.cn>  
 Address: 2200 Ringwood Ave San Jose, CA 95131 USA



Please scan the QR code to access additional product information:  
**MRP-S2 Rabbit pAb**

For Research Use Only. Not for Use in Diagnostic Procedures.

[Antibody](#) | [ELISA Kits](#) | [Protein](#) | [Reagents](#)