

MRP-S18A Rabbit pAb

CatalogNo: YT2877

| Key Features

Host Species

- Rabbit

Reactivity

- Human, Mouse, Rat

Applications

- IHC, IF, ELISA

MW

- 27-30kD (Observed)

Isotype

- IgG

| Recommended Dilution Ratios

IHC 1:100-1:300

ELISA 1:40000

IF 1:50-200

| Storage

Storage*

-15°C to -25°C/1 year (Do not lower than -25°C)

Formulation

Liquid in PBS containing 50% glycerol, 0.5% BSA and 0.02% sodium azide.

| Basic Information

Clonality

Polyclonal

| Immunogen Information

Immunogen

The antiserum was produced against synthesized peptide derived from human MRPS18A. AA range: 81-130

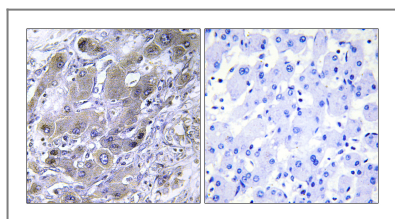
Specificity

MRP-S18A Polyclonal Antibody detects endogenous levels of MRP-S18A protein.

| Target Information

Gene name	MRPS18A		
Protein Name	28S ribosomal protein S18a mitochondrial		
	Organism	Gene ID	UniProt ID
	Human	55168;	Q9NVS2;
	Mouse	68565;	Q99N85;
Cellular Localization	Mitochondrion .		
Tissue specificity	Prostate,		
Function	similarity:Belongs to the ribosomal protein S18P family.,subunit:Component of the mitochondrial ribosome small subunit (28S) which comprises a 12S rRNA and about 30 distinct proteins.,		

Validation Data



Immunohistochemistry analysis of paraffin-embedded human liver carcinoma tissue, using MRPS18A Antibody. The picture on the right is blocked with the synthesized peptide.

Contact information

Orders: order.cn@immunoway.com
 Support: support.cn@immunoway.com
 Telephone: 400-8787-807(China)
 Website: <http://www.immunoway.com.cn>
 Address: 2200 Ringwood Ave San Jose, CA 95131 USA



Please scan the QR code
 to access additional
 product information:
**MRP-S18A Rabbit
 pAb**

For Research Use Only. Not for Use in Diagnostic Procedures.

[Antibody](#) | [ELISA Kits](#) | [Protein](#) | [Reagents](#)