

MRP-L9 Rabbit pAb

CatalogNo: YT2873

Key Features

Host Species

- Rabbit

Reactivity

- Human,Rat,Mouse,

Applications

- WB,IHC

MW

- 30kD (Observed)

Isotype

- IgG

Recommended Dilution Ratios

WB 1:500-2000**IHC 1:50-300**

Storage

Storage*

-15°C to -25°C/1 year(Do not lower than -25°C)

Formulation

Liquid in PBS containing 50% glycerol, 0.5% BSA and 0.02% sodium azide.

Basic Information

Clonality

Polyclonal

Immunogen Information

Immunogen

The antiserum was produced against synthesized peptide derived from human MRPL9. AA range:211-260

Specificity

MRP-L9 Polyclonal Antibody detects endogenous levels of MRP-L9 protein.

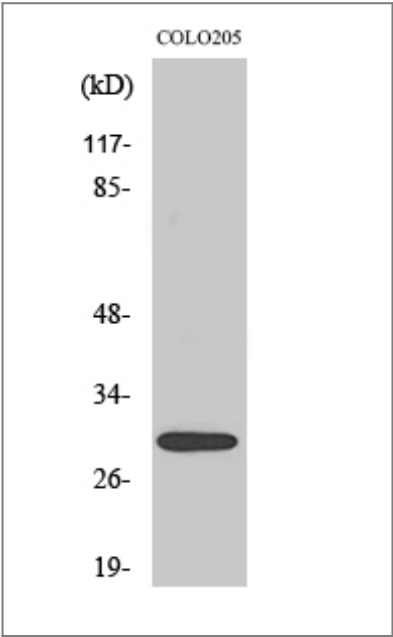
Target Information

Gene name

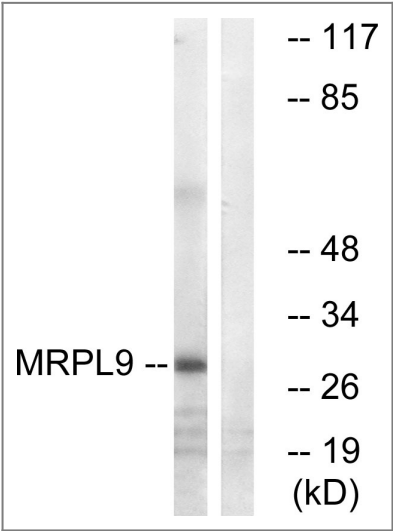
MRPL9

| | | | |
|-----------------------|--|-------------------------|--------------------------|
| Protein Name | 39S ribosomal protein L9 mitochondrial | | |
| | Organism | Gene ID | UniProt ID |
| | Human | 65005 ; | Q9BYD2 ; |
| | Mouse | | Q99N94 ; |
| Cellular Localization | Mitochondrion . | | |
| Tissue specificity | Lung, | | |
| Function | similarity:Belongs to the ribosomal protein L9P family., | | |

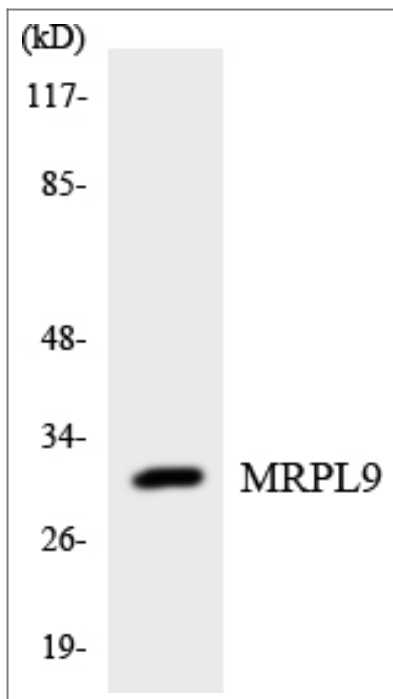
Validation Data



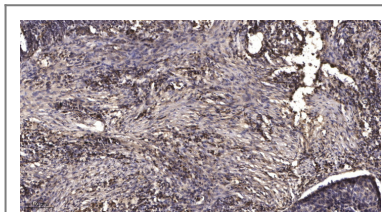
Western Blot analysis of various cells using MRP-L9 Polyclonal Antibody



Western blot analysis of lysates from COLO cells, using MRPL9 Antibody. The lane on the right is blocked with the synthesized peptide.



Western blot analysis of the lysates from HUVEC cells using MRPL9 antibody.



Immunohistochemical analysis of paraffin-embedded human squamous cell carcinoma of lung. 1, Antibody was diluted at 1:200 (4° overnight). 2, Tris-EDTA, pH 9.0 was used for antigen retrieval. 3, Secondary antibody was diluted at 1:200 (room temperature, 45 min).

Contact information

Orders: order.cn@immunoway.com
 Support: support.cn@immunoway.com
 Telephone: 400-8787-807 (China)
 Website: <http://www.immunoway.com.cn>
 Address: 2200 Ringwood Ave San Jose, CA 95131 USA



Please scan the QR code to access additional product information:
MRP-L9 Rabbit pAb

For Research Use Only. Not for Use in Diagnostic Procedures.

[Antibody](#) | [ELISA Kits](#) | [Protein](#) | [Reagents](#)