

MRP-L18 Rabbit pAb

CatalogNo: YT2851

Key Features

Host Species

- Rabbit

Reactivity

- Human, Mouse

Applications

- WB, IHC, IF, ELISA

MW

- 21kD (Observed)

Isotype

- IgG

Recommended Dilution Ratios

WB 1:500-1:2000

IHC 1:100-1:300

ELISA 1:20000

IF 1:50-200

Storage

Storage*

-15°C to -25°C/1 year (Do not lower than -25°C)

Formulation

Liquid in PBS containing 50% glycerol, 0.5% BSA and 0.02% sodium azide.

Basic Information

Clonality

Polyclonal

Immunogen Information

Immunogen

The antiserum was produced against synthesized peptide derived from human MRPL18. AA range: 1-50

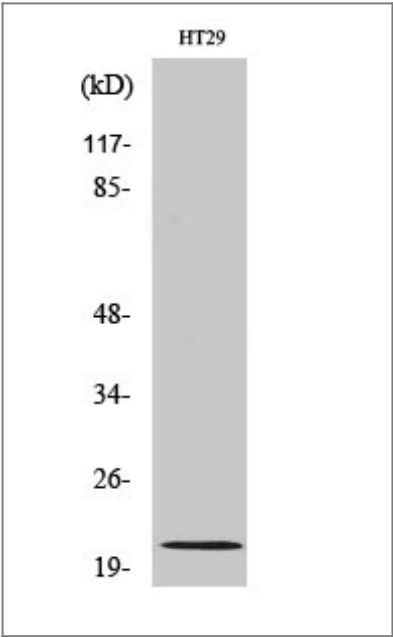
Specificity

MRP-L18 Polyclonal Antibody detects endogenous levels of MRP-L18 protein.

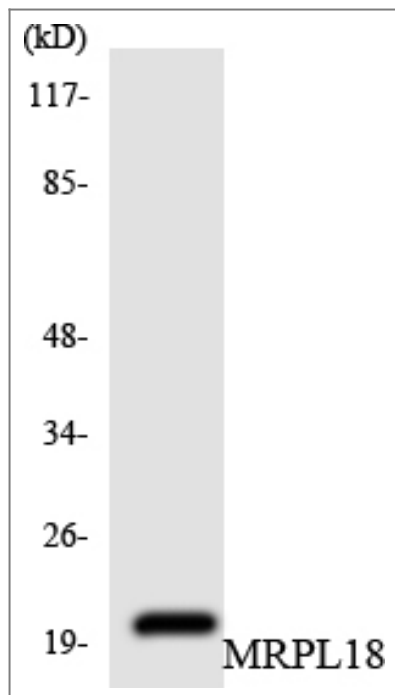
Target Information

Gene name	MRPL18		
Protein Name	39S ribosomal protein L18 mitochondrial		
	Organism	Gene ID	UniProt ID
	Human	29074 ;	Q9H0U6 ;
	Mouse		Q9CQL5 ;
Cellular Localization	Mitochondrion .		
Tissue specificity	Brain, Eye, Umbilical cord blood,		
Function	similarity: Belongs to the ribosomal protein L18P family.,		

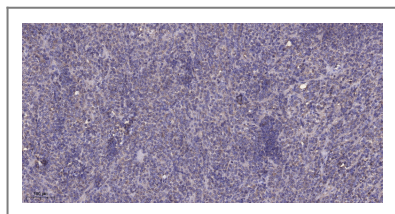
Validation Data



Western Blot analysis of various cells using MRP-L18 Polyclonal Antibody diluted at 1:1000



Western blot analysis of the lysates from HUVEC cells using MRPL18 antibody.



Immunohistochemical analysis of paraffin-embedded human colon cancer. 1, Antibody was diluted at 1:200 (4° overnight). 2, Tris-EDTA, pH 9.0 was used for antigen retrieval. 3, Secondary antibody was diluted at 1:200 (room temperature, 45 min).

Contact information

Orders: order.cn@immunoway.com
 Support: support.cn@immunoway.com
 Telephone: 400-8787-807 (China)
 Website: <http://www.immunoway.com.cn>
 Address: 2200 Ringwood Ave San Jose, CA 95131 USA



Please scan the QR code
 to access additional
 product information:
MRP-L18 Rabbit pAb

For Research Use Only. Not for Use in Diagnostic Procedures.

[Antibody](#) | [ELISA Kits](#) | [Protein](#) | [Reagents](#)