

MPP9 Rabbit pAb

CatalogNo: YT2824

Key Features

Host Species

- Rabbit

Reactivity

- Human, Mouse

Applications

- WB, IHC

MW

- 78kD (Observed)

Isotype

- IgG

Recommended Dilution Ratios

WB 1:500-2000

IHC 1:50-300

Storage

Storage*

-15°C to -25°C/1 year (Do not lower than -25°C)

Formulation

Liquid in PBS containing 50% glycerol, 0.5% BSA and 0.02% sodium azide.

Basic Information

Clonality

Polyclonal

Immunogen Information

Immunogen

The antiserum was produced against synthesized peptide derived from human MPHOSPH9. AA range: 539-588

Specificity

MPP9 Polyclonal Antibody detects endogenous levels of MPP9 protein.

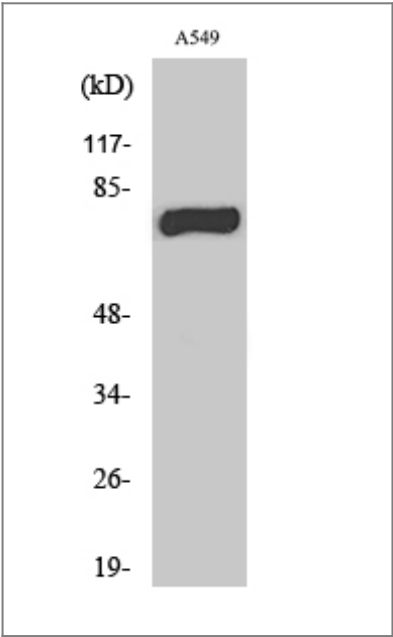
Target Information

Gene name

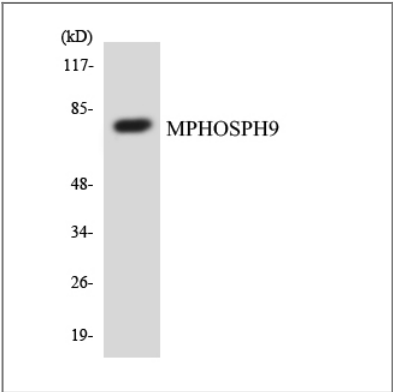
MPHOSPH9

Protein Name	M-phase phosphoprotein 9		
	Organism	Gene ID	UniProt ID
	Human	10198 ;	Q99550 ;
	Mouse		A6H5Y1 ;
Cellular Localization	Cytoplasm, cytoskeleton, microtubule organizing center, centrosome, centriole . Golgi apparatus membrane ; Peripheral membrane protein . Cytoplasm, cytoskeleton, microtubule organizing center, centrosome . Localizes to the distal and proximal end of centriole pairs in duplicated centrosomes. In ciliated cells, localizes to the distal and proximal end of daughter centriole and proximal of the mother centriole but not in the distal end of the mother centriole (PubMed:21399614). Recruited by KIF24 to the distal end of mother centriole where it forms a ring-like structure (PubMed:30375385). .		
Tissue specificity	Lymphoblast,Tongue,		
Function	PTM:Phosphorylated in M (mitotic) phase.,		

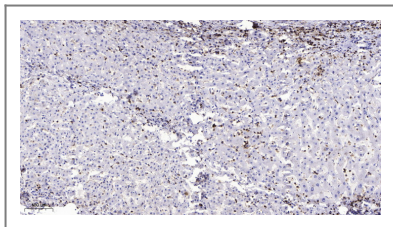
| Validation Data



Western Blot analysis of various cells using MPP9 Polyclonal Antibody



Western blot analysis of the lysates from COLO205 cells using MPHOSPH9 antibody.



Immunohistochemical analysis of paraffin-embedded human liver cancer. 1, Antibody was diluted at 1:200(4° overnight). 2, Tris-EDTA,pH9.0 was used for antigen retrieval. 3,Secondary antibody was diluted at 1:200(room temperature, 45min).

| Contact information

Orders: order.cn@immunoway.com
Support: support.cn@immunoway.com
Telephone: 400-8787-807(China)
Website: <http://www.immunoway.com.cn>
Address: 2200 Ringwood Ave San Jose, CA 95131 USA



Please scan the QR code
to access additional
product information:
MPP9 Rabbit pAb

For Research Use Only. Not for Use in Diagnostic Procedures.

[Antibody](#) | [ELISA Kits](#) | [Protein](#) | [Reagents](#)