

MNK2 Rabbit pAb

CatalogNo: YT2808

Key Features

Host Species

- Rabbit

Reactivity

- Human, Mouse, Rat

Applications

- WB, ELISA, IHC

MW

- 51kD (Observed)

Isotype

- IgG

Storage

Storage* -15°C to -25°C/1 year (Do not lower than -25°C)

Formulation Liquid in PBS containing 50% glycerol, 0.5% BSA and 0.02% sodium azide.

Recommended Dilution Ratios

WB 1:500-2000

IHC 1:50-300

ELISA 1:2000-20000

Basic Information

Clonality Polyclonal

Immunogen Information

Immunogen Synthesized peptide derived from the Internal region of human Mnk2.. AA range:1-80

Specificity Mnk2 Polyclonal Antibody detects endogenous levels of Mnk2 protein.

Target Information

Gene name MKNK2 GPRK7 MNK2

Protein Name MAP kinase-interacting serine/threonine-protein kinase 2

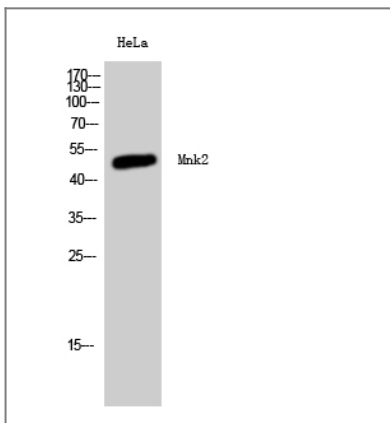
Organism	Gene ID	UniProt ID
Human	2872 ;	Q9HBH9 ;
Mouse	17347 ;	Q8CDB0 ;
Rat	299618 ;	Q5U2N4 ;

Cellular Localization [Isoform 2]: Nucleus, PML body.; [Isoform 1]: Cytoplasm.

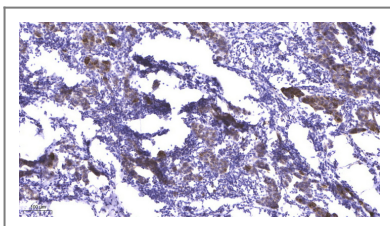
Tissue specificity Ubiquitously expressed in all tissues examined. Isoform 2 is expressed at higher levels in the ovary than is isoform 1.

Function Catalytic activity:ATP + a protein = ADP + a phosphoprotein.,cofactor:Binds 1 zinc ion per subunit.,cofactor:Magnesium.,Function:May play a role in the response to environmental stress and cytokines. Appears to regulate transcription by phosphorylating EIF4E, thus increasing the affinity of this protein for the 7-methylguanosine-containing mRNA cap.,PTM: Dual phosphorylation of Thr-244 and Thr-249 activates the kinase. Phosphorylation of Thr-379 activates the kinase.,similarity:Belongs to the protein kinase superfamily. CAMK Ser/Thr protein kinase family.,similarity:Contains 1 protein kinase domain.,subunit:Monomer. Interacts with the C-terminal regions of EIF4G1 and EIF4G2. Also binds to dephosphorylated ERK1 and ERK2. Isoform 2 interacts with ESR2.,tissue specificity:Ubiquitously expressed in all tissues examined. Isoform 2 is expressed at higher levels in the ovary than is isoform 1.,

Validation Data



Western Blot analysis of HeLa cells using Mnk2 Polyclonal Antibody



Immunohistochemical analysis of paraffin-embedded human Breast cancer. 1, Antibody was diluted at 1:200(4° overnight). 2, Tris-EDTA,pH9.0 was used for antigen retrieval. 3,Secondary antibody was diluted at 1:200(room temperature, 45min).

| Contact information

Orders: order.cn@immunoway.com
Support: support.cn@immunoway.com
Telephone: 400-8787-807(China)
Website: <http://www.immunoway.com.cn>
Address: 2200 Ringwood Ave San Jose, CA 95131 USA



Please scan the QR code
to access additional
product information:
MNK2 Rabbit pAb

For Research Use Only. Not for Use in Diagnostic Procedures.

[Antibody](#) | [ELISA Kits](#) | [Protein](#) | [Reagents](#)